

Datasheet



Mouse mAb to **Lewis b**
Clone **2-25LE**
Isotype **IgG1-κ**

Source

A BALB/c mouse was immunized with ALe^{a-b+} ovarian cyst mucin.
Fusion partner: SP-2/0.

Specifications

2-25LE reacts with Lewis b antigen which is highly expressed in stomach, colon, small intestine, lung and kidney and to a lesser extent in salivary gland, bladder, uterus and liver.

Species reactivity

Positive: human, guinea pig.

Applications

Demonstration of Lewis b blood group in IHC, ELISA, flow cytometry, immunofluorescence and Western blot.

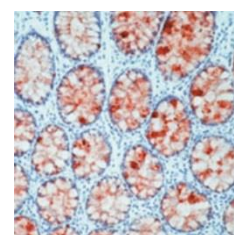


Figure 1: Human colon stained with 2-25LE (paraffin)

ELISA	Flow cytometry	Frozen sections	Immunofluorescence	Paraffin sections	Western blot
+	+	+	+	Citrate	+

Format

Produced in tissue culture, contains no host Ig. Antibodies are affinity purified and presented in PBS with 0,02 % sodium azide.

Stored at 4°C- 8°C, shelf life is at least 24 months after purchase.

Dilution advice

- ELISA (solid phase: not known; tracer: 0,001-100 µg/ml for 30 min at RT).
- Flow cytometry (0.5-1.0 µg/million cells in 0.1 ml).
- Immunoblotting (1-2 µg/ml).
- Immunofluorescence (0.5-1 µg/ml).
- Immunohistology (1-2 µg/ml for 30 min at RT; staining of formalin-fixed tissues requires boiling tissue sections in 10mM citrate buffer, pH 6.0, for 10-20 min followed by cooling at RT for 20 minutes).

Positive control

Stomach, colon, small intestine, lung and kidney, colorectal adenocarcinoma.

Datasheet



References

- Bara et al. *Cancer Res.* **46**: 3983-3898 (1986).
- Rouger Ph. et al. (Eds., Arnette): Proceedings of the First International Workshop on monoclonal antibodies against human red blood cells and related antigens (Paris 1987) in: *Rev Fr Transfus Immunohematol.* **30(5)**: 353-717 (1987).
- Bara et al. *Biochem. J.* **254**: 185-193 (1988).
- Creuzot-Garcher et al. *Invest Oph(thalmol Vis Sci.* **40(8)**:1631-6 (1999).
- Good et al. *Vox Sanguinis* **62(3)**: 180-189 (1992).
- Torrado et al. *Cancer Epidemiol Biomarkers Prev.* **1(3)**: 199-205 (1992).
- Torrado et al. *Gastroenterology*, **102 (2)**: 424-430 (1992).