

**Catalogue No.**

**Qty:**

800 µg

## Anti-Rab5a

**Source:** Goat

**General description:** Goat polyclonal antibody to mouse Rab5a. Rab5a belongs to the small GTPase superfamily, Rab family. Rab5a is an Early Endosome Marker and functions as a key regulator of vesicular trafficking during early endocytosis.

**Alternative names:** RAB5A, RAS-associated protein RAB5A, ras-related protein Rab-5A antibody.

**Form:** Polyclonal antibody supplied as a 200 µl (4 mg/ml) aliquot in PBS, 20% glycerol and 0.05% sodium azide. This antibody is epitope-affinity purified from goat antiserum.

**Immunogen:** Purified recombinant peptide derived from within residues 115 aa to the C-terminus of mouse Rab5a produced in E. coli.

**Specificity:** Detects Rab5a protein by Western blot in cell lysates of transfected cells with GFP-Rab5a. This Ab is specific for Rab5a; it does not recognize Rab5b and Rab5c.

**Reactivity:** Reacts with Human, Rat, Mouse, Monkey and Canine proteins

Sample	WB	IHC (F)	IHC (P)	IF	ELISA
Human	+++	+++	+++	+++	ND
Rat	+++	+++	+++	+++	ND
Mouse	+++	+++	+++	+++	ND
Canine	+++	+++	+++	+++	ND
Monkey	+++	+++	+++	+++	ND

+++ excellent, ++ good, + poor, ND not determined

**Usage:**

WB: 1:250-1:5,000

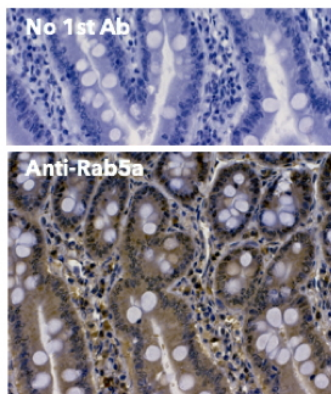
IHC (F): 1:100-1:500

IHC (P): 1:100-1:500

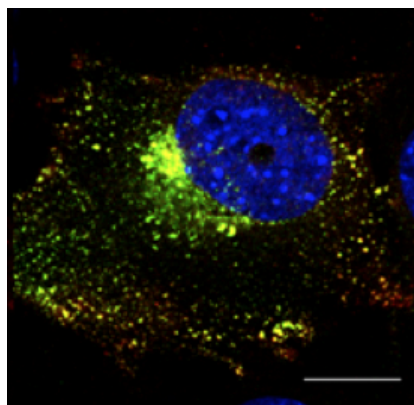
IF: 1:50-1:250

**Storage:** For continuous use, store at 2-8 C for one-two days. For extended storage, store in -20 C freezer. Working dilution samples should be discarded if not used within 12 hours.

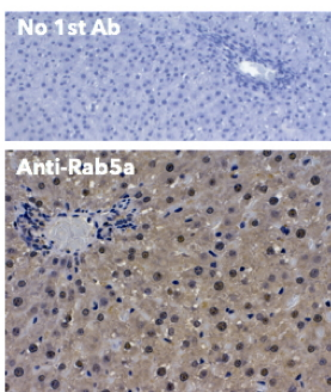
**Special instructions:** The antibody solution should be gently mixed before use. Avoid freeze/thaw cycles..



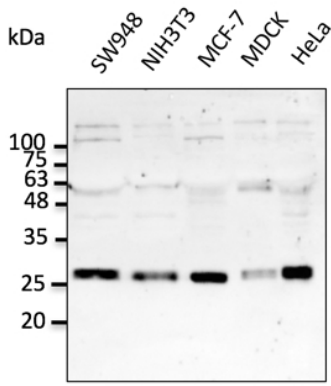
IHC of mouse Intestine using anti-Rab5a antibody and FFPE tissue after heat-induced antigen retrieval. Anti-Rab5a Ab at 1:250/DAB detection.



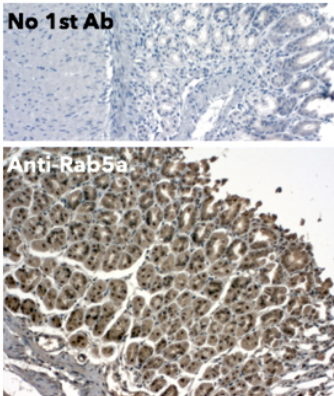
Immunofluorescence – anti-Rab5a Ab in transduced Hepa1-6 cells with Ad GFP-Rab5a at 1/50 dilution; cells were fixed with 4% of PFA;



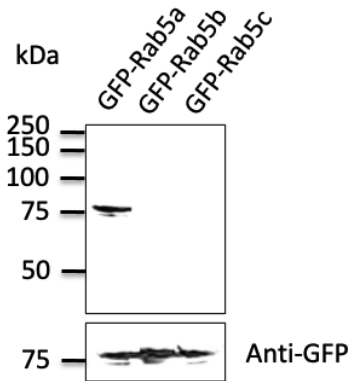
IHC of mouse liver using anti-Rab5a antibody and FFPE tissue after heat-induced antigen retrieval. Anti-Rab5a Ab at 1:250/DAB detection.



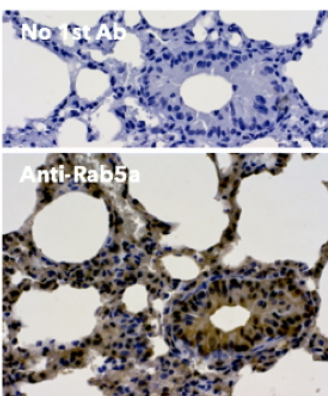
Anti-Rab5a Ab at 1/2,500 dilution; lysates at 50  $\mu$ g per lane; rabbit polyclonal to goat IgG (HRP) at 1/10,000 dilution;



IHC of mouse stomach using anti-Rab5a antibody and FFPE tissue after heat-induced antigen retrieval. Anti-Rab5a Ab at 1:250/DAB detection.



Anti-Rab5a Ab at 1/500 dilution; 293 cells transfected with GFP-Rab5; rabbit polyclonal to goat IgG (HRP) at 1/10,000 dilution;



IHC of mouse lung using anti-Rab5a antibody and FFPE tissue after heat-induced antigen retrieval. Anti-Rab5a Ab at 1:250/DAB detection.

For research use only, not for diagnostic use

In order to produce high specific antibodies SICGEN has invested a lot of time and effort into selecting immunogen sequences. SICGEN has decided to protect this information by not publishing it on the website. However, these sequences are available on request.