

Catalogue No.

Qty:

600 µg

Anti-Rab7a

Source: Goat

General description: Goat polyclonal antibody to mouse Rab7. Rab7 belongs to the small GTPase superfamily, Rab family. It has been localized to late endosomes, regulates vesicle traffic in the late endosomes and also from late endosomes to lysosomes. Rab7 also contributes to the maturation of phagosomes (acidification).

Alternative names: CMT2B, PRO2706, RAB7A, RAB7B, Rab-7L1, Rab29, RAS-associated protein RAB7A, ras-related protein Rab-7B, ras-related protein Rab-7A, ras-related protein Rab-7B antibody.

Form: Polyclonal antibody supplied as a 200 µl (3 mg/ml) aliquot in PBS, 20% glycerol and 0.05% sodium azide. This antibody is epitope-affinity purified from goat antiserum.

Immunogen: Polyclonal antibody supplied as a 200 µl (3 mg/ml) aliquot in PBS, 20% glycerol and 0.05% sodium azide. This antibody is epitope-affinity purified from goat antiserum.

Specificity: Detects Rab7a protein in the human, rat and mouse whole cell lysates and transfected cells with GFP-Rab7a by Western blot. This Ab is specific for Rab7a.

Reactivity: Reacts with Human, Rat, Mouse, Monkey and Canine proteins

Sample	WB	IHC (F)	IHC (P)	IF	ELISA
Human	+++	+++	+++	+++	ND
Rat	+++	+++	+++	+++	ND
Mouse	+++	+++	+++	+++	ND
Canine	+++	+++	+++	+++	ND
Monkey	+++	+++	+++	+++	ND

+++ excellent, ++ good, + poor, ND not determined

Usage:

WB: 1:250-1:5,000

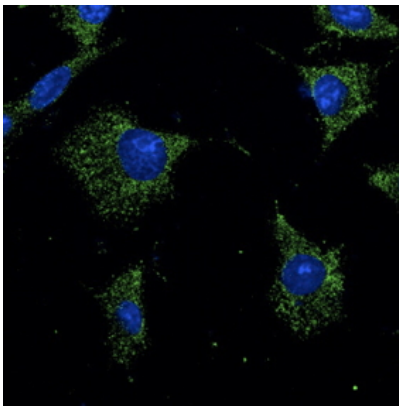
IF: 1:50-1:250
IHC (F): 1:100-1:500
IHC (P): 1:100-1:500

Storage: For continuous use, store at 2-8 C for one-two days. For extended storage, store in -20 C freezer. Working dilution samples should be discarded if not used within 12 hours.

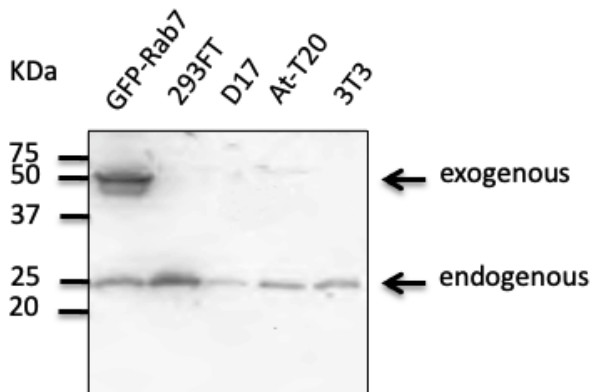
Special instructions: The antibody solution should be gently mixed before use..

References:

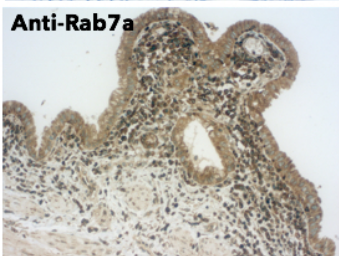
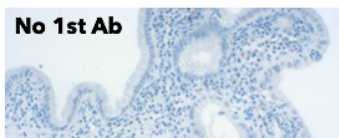
1. Cardoso MHS, PhD Thesis, NOVA University of Lisbon, Portugal 2018



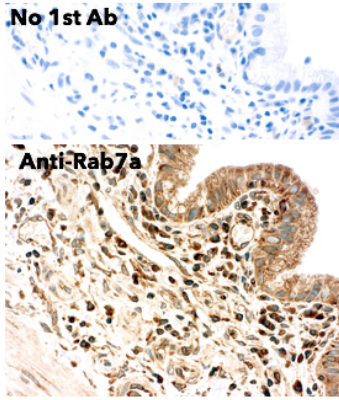
Immunofluorescence – anti-Rab7a Ab in Hepa1-6 cells at 1/50 dilution; cells were fixed with methanol;



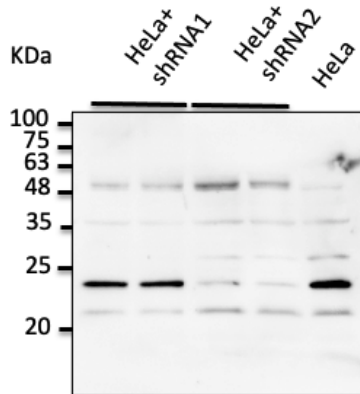
Anti-Rab7a Ab at 1/500 dilution; 293 cells transfected with GFP-Rab7a, 293FT, D17, At-T20 and 3T3; lysates at 100 µg per lane; rabbit polyclonal to goat IgG (HRP) at 1/10,000 dilution;



IHC of human gallbladder using Anti-Rab7a antibody and FFPE tissue after heat-induced antigen retrieval. Anti-Rab7a Ab at 1:250/DAB detection.



IHC of human gallbladder using Anti-Rab7a antibody and FFPE tissue after heat-induced antigen retrieval. Anti-Rab7a Ab at 1:250/DAB detection.



Anti-Rab7a Ab at 1/2,500 dilution; HeLa cells transduced with Ad Rab7a shRNA; lysates at 50 μ g per lane; rabbit polyclonal to goat IgG (HRP) at 1/10,000 dilution;

For research use only, not for diagnostic use

SICGEN's Proprietary Immunogen Policy

In order to produce high specific antibodies SICGEN has invested a lot of time and effort into selecting immunogen sequences. SICGEN has decided to protect this information by not publishing it on the website. However, these sequences are available on request.