

**Catalogue No.**

**Qty:**

600 µg

## Anti-Rab9a

**Source:** Goat

**General description:** Goat polyclonal antibody to Rab9a. Rab9a belongs to the small GTPase superfamily, Rab family. This protein may be involved in endosome-to-Golgi transport.

**Alternative names:** RAB9, RAB9A, member RAS oncogene family, ras-related protein Rab-9A antibody.

**Form:** Polyclonal antibody supplied as a 200 µl (3 mg/ml) aliquot in PBS, 20% glycerol and 0.05% sodium azide. This antibody is epitope-affinity purified from goat antiserum.

**Immunogen:** Purified recombinant peptide derived from within residues 115 aa to the C-terminus of Rab9a produced in E. coli.

**Specificity:** Rab9a antibody detects endogenous levels of Rab9a protein and transfected cells with GFP-Rab9a cds.

**Reactivity:** Reacts with Human, Rat, Mouse, Monkey and Canine proteins

Sample	WB	IHC (F)	IHC (P)	IF	ELISA
Human	+++	ND	ND	ND	ND
Rat	+++	ND	ND	ND	ND
Mouse	+++	ND	ND	ND	ND
Canine	+++	ND	ND	ND	ND
Monkey	+++	ND	ND	ND	ND

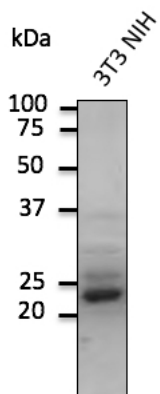
+++ excellent, ++ good, + poor, ND not determined

**Usage:**

WB: 1:250-1:2,000

**Storage:** For continuous use, store at 2-8 C for one-two days. For extended storage, store in -20 C freezer. Working dilution samples should be discarded if not used within 12 hours.

**Special instructions:** The antibody solution should be gently mixed before use. Avoid freeze/thaw cycles..



Anti-Rab9a Ab at 1/500 dilution; 3T3 NIH cell line lysates at 100 µg per lane; rabbit polyclonal to goat IgG (HRP) at 1/10,000 dilution;

For research use only, not for diagnostic use

**SICGEN's Proprietary Immunogen Policy**

In order to produce high specific antibodies SICGEN has invested a lot of time and effort into selecting immunogen sequences. SICGEN has decided to protect this information by not publishing it on the website. However, these sequences are available on request.