

**Catalogue No.**

**Qty:**

400 µg

## Anti-CDH1

**Source:** Goat

**General description:** Goat polyclonal to CDH1. CDH1 is a classical member of the cadherin superfamily. This protein is a calcium dependent cell-cell adhesion glycoprotein comprised consists of 5 cadherin repeats in the extracellular domain, one trans membrane domain, and a and a highly conserved intracellular domain that binds b-catenin and p120-catenin. CDH1 is involved in mechanisms regulating proliferation, mobility and cell-cell adhesions of epithelial cells. Loss of E-cadherin function or expression has been implicated in cancer metastasis and progression.

**Alternative names:** ARC-1, CAM 120/80, CD324, CDH1, cdhc-A, CDHE, ECAD, E-Cad E-cadherin, Epithelial cadherin, I-cam, LCAM, P09803, P12830 / Q9R0T4, UVO, Uvomorulin, XBcad, XB-cadherin, XTCAD-1 antibody.

**Form:** Polyclonal antibody supplied as a 200 µl (2 mg/ml) aliquot in PBS, 20% glycerol and 0.05% sodium azide. This antibody is epitope-affinity purified from goat antiserum.

**Immunogen:** Purified recombinant peptide derived from within residues 750 to 850 of human CDH1 produced in E. coli.

**Specificity:** Detects endogenous levels of total E-cadherin protein by Western blot in the whole cell lysates (COS-7 and MDCK).

**Reactivity:** Reacts with Human, Rat, Mouse, Monkey and Canine proteins

Sample	WB	IHC (F)	IHC (P)	IF	ELISA
Human	+++	ND	ND	ND	ND
Rat	+++	ND	ND	ND	ND
Mouse	+++	ND	ND	ND	ND
Canine	+++	ND	ND	ND	ND
Monkey	+++	ND	ND	ND	ND

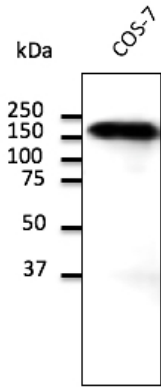
+++ excellent, ++ good, + poor, ND not determined

**Usage:**

WB: 1:500-1:2,000

**Storage:** For continuous use, store at 2-8 C for one-two days. For extended storage, store in -20 C freezer. Working dilution samples should be discarded if not used within 12 hours.

**Special instructions:** The antibody solution should be gently mixed before use. Avoid freeze/thaw cycles..



Endogenous CDH1 detected at 1/500 dilution; lysate at 100 µg per lane and rabbit polyclonal to goat IgG (HRP) at 1/10,000 dilution.

For research use only, not for diagnostic use

**SICGEN's Proprietary Immunogen Policy**

In order to produce high specific antibodies SICGEN has invested a lot of time and effort into selecting immunogen sequences. SICGEN has decided to protect this information by not publishing it on the website. However, these sequences are available on request.