

Catalogue No.

Qty:

600 µg

Anti-Rab35

Source: Goat

General description: RAB35 belongs to the large RAB family of low molecular weight GTPases that are involved in intracellular membrane trafficking. Rab35 is restricted to the plasma membrane and endocytic compartments and controls a fast endocytic-recycling pathway.

Alternative names: RAB1C, GTP-binding protein RAY, H-ray, ras-related protein Rab-35; ras-related protein rab-1C and RAY antibody.

Form: Polyclonal antibody supplied as a 200 µl (3 mg/ml) aliquot in PBS, 20% glycerol and 0.05% sodium azide. This antibody is epitope-affinity purified from goat antiserum.

Immunogen: Purified recombinant peptide derived from within residues 110 aa to the C-terminus of mouse Rab35 produced in E. coli.

Specificity: Detects Rab35 by Western blot in transfected cells with GFP-Rab35.

Reactivity: Reacts with Human, Rat, Mouse, Monkey and Canine proteins

Sample	WB	IHC (F)	IHC (P)	IF	ELISA
Human	+++	ND	ND	ND	ND
Rat	+++	ND	ND	ND	ND
Mouse	+++	ND	ND	ND	ND
Canine	+++	ND	ND	ND	ND
Monkey	+++	ND	ND	ND	ND

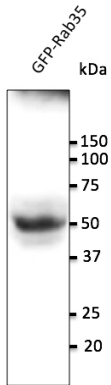
+++ excellent, ++ good, + poor, ND not determined

Usage:

WB: 1:250-1:2,000

Storage: For continuous use, store at 2-8 C for one-two days. For extended storage, store in -20 C freezer. Working dilution samples should be discarded if not used within 12 hours.

Special instructions: The antibody solution should be gently mixed before use..



Anti-Rab35 Ab at 1/500 dilution; 293HEK transfected with GFP-Rab35; lysates at 100 μ g per lane; rabbit polyclonal to goat IgG (HRP) at 1/10,000 dilution;

For research use only, not for diagnostic use

SICGEN's Proprietary Immunogen Policy

In order to produce high specific antibodies SICGEN has invested a lot of time and effort into selecting immunogen sequences. SICGEN has decided to protect this information by not publishing it on the website. However, these sequences are available on request.