

Catalogue No.

Qty:

600 µg

Anti-HIF1a

Source: Goat

General description: Goat polyclonal to alpha subunit of transcription factor hypoxia-inducible factor-1 (HIF-1), which is a heterodimer composed of an alpha and a beta subunit. HIF-1 functions as a master regulator of cellular and systemic homeostatic response to hypoxia by activating transcription of many genes, including those involved in apoptosis, angiogenesis, energy metabolism, and other genes whose protein products increase oxygen delivery or facilitate metabolic adaptation to hypoxia. HIF-1 thus plays an essential role in tumour angiogenesis, embryonic vascularization, and pathophysiology of ischemic disease.

Alternative names: alpha subunit (basic helix-loop-helix transcription factor), ARNT interacting protein, basic-helix-loop-helix-PAS protein MOP1, bHLHe78, class E basic helix-loop-helix protein 78, HIF-1alpha, HIF1, HIF1-ALPHA, HIF1?, hypoxia inducible factor 1, hypoxia-inducible factor 1 alpha isoform I.3, hypoxia-inducible factor 1, hypoxia-inducible factor 1-alpha, member of PAS protein 1, member of PAS superfamily 1, MOP1, PASD8, PAS domain-containing protein 8 antibody.

Form: Polyclonal antibody supplied as a 200 µl (3 mg/ml) aliquot in PBS, 20% glycerol and 0.05% sodium azide. This antibody is epitope-affinity purified from goat antiserum.

Immunogen: Purified recombinant peptide derived from within residues 780 aa to the C-terminus of human HIF1a produced in E. coli.

Specificity: Detects HIF1a in transfected cells and a band of approximately 120 kDa by Western blot in cell lysates.

Reactivity: Reacts with Human, Rat, Mouse, Monkey and Canine proteins

Sample	WB	IHC (F)	IHC (P)	IF	ELISA
Human	+++	ND	ND	ND	ND
Rat	+++	ND	ND	ND	ND
Mouse	+++	ND	ND	ND	ND
Canine	+++	ND	ND	ND	ND
Monkey	+++	ND	ND	ND	ND

+++ excellent, ++ good, + poor, ND not determined

Usage:

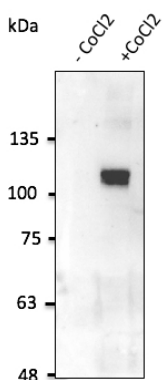
WB: 1:500-1:2,000

Storage: For continuous use, store at 2-8 C for one-two days. For extended storage, store in -20 C freezer. Working dilution samples should be discarded if not used within 12 hours.

Special instructions: The antibody solution should be gently mixed before use..

References:

1. Ferreira JV, Rosa Soares A, Ramalho JS, et al. PLoS One. 2019 Oct. PMID: 31613922
2. Rodrigues TDA, PhD Thesis, University of Coimbra, Portugal 2018
3. Fonseca LMO, MSc Thesis, University of Berlin, Germany 2018
4. Rodrigues T, Matafome P, Sereno J, et al. Sci Rep 2017 May 10;7:1698. PMID: 28490763
5. Ferreira JV, Soares AR, Ramalho JS, et al. Scientific Reports 5. May 2015. PMID: 25958982
6. Sacramento JF, Ribeiro MJ, Rodrigues T, et al. Respir Physiol Neurobiol 2016 Jul. PMID: 26993367



Anti-HIF1a Ab at 2,500 dilution; HT1080 cells in the presence of CoCl₂; lysate at 100 µg per lane; rabbit polyclonal to goat IgG (HRP) at 1/10,000 dilution;

For research use only, not for diagnostic use

SICGEN's Proprietary Immunogen Policy

In order to produce high specific antibodies SICGEN has invested a lot of time and effort into selecting immunogen sequences. SICGEN has decided to

protect this information by not publishing it on the website. However, these sequences are available on request.