

Catalogue No.

Qty:

600 µg

Anti-RYMV P1

Source: Goat

General description: Goat polyclonal antibody to P1 protein from rice yellow mottle virus (RYMV). P1 protein is a product from the gene ORF1. This protein has a possible role in suppression of post-transcriptional gene silencing and viral movement.

Alternative names: P1 (ORF1), RYMV, Rice Yellow Mottle Virus antibody.

Form: Polyclonal antibody supplied as a 200 µl (3 mg/ml) aliquot in PBS, 20% glycerol and 0.05% sodium azide. This antibody is epitope-affinity purified from goat antiserum.

Immunogen: Purified recombinant peptide derived from within residues 55 aa to N-terminal of RYMV P1 produced in E. coli.

Specificity: Detects RYMV P1 full length recombinant fusion protein GFP-P1 expressed in transfected mammalian cells.

Reactivity: Reacts with Transfected cells proteins

Sample	WB	IHC (F)	IHC (P)	IF	ELISA
Transfected cells	+++	ND	ND	ND	ND

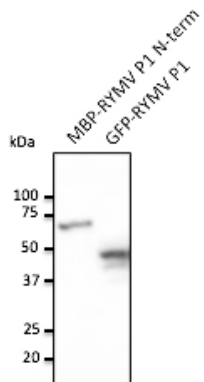
+++ excellent, ++ good, + poor, ND not determined

Usage:

WB: 1:500-1:2,000

Storage: For continuous use, store at 2-8 C for one-two days. For extended storage, store in -20 C freezer. Working dilution samples should be discarded if not used within 12 hours.

Special instructions: The antibody solution should be gently mixed before use..



Anti-RYMV P1 Ab at 1/1,000 dilution; MBP-RYMV P1 N-term recombinant protein and HEK293 transfected cell lysate; rabbit polyclonal to goat IgG (HRP) at 1/10,000 dilution.

For research use only, not for diagnostic use

SICGEN's Proprietary Immunogen Policy

In order to produce high specific antibodies SICGEN has invested a lot of time and effort into selecting immunogen sequences. SICGEN has decided to protect this information by not publishing it on the website. However, these sequences are available on request.