



Product Data Sheet

001 Rev2 Aug 2016 by JR

Catalogue No. AB0272-100

Qty: 300 µg (3 mg/ml)

CD5 Polyclonal Antibody

Source: Goat

General description: Goat polyclonal antibody to CD5. This protein is a member of the scavenger receptor cysteine-rich (SRCR) superfamily. Members of this family are membrane-anchored proteins or secreted mainly found in cells (thymocytes, T lymphocytes and a subset of B lymphocytes) associated with the immune system.

Alternative names: LEU1, T1 antibody.

Form: Polyclonal antibody supplied as a 100 µl (3 mg/ml) aliquot in PBS, 20% glycerol and 0.05% sodium azide. This antibody is epitope-affinity purified from goat antiserum.

Immunogen: Recombinant peptide derived from within residues 105-210 aa of human CD5 produced in *E. coli*.

Specificity: Detects endogenous levels of CD5 by Western blot.

Reactivity: Reacts against human, rat, mouse, canine and monkey proteins.

Sample	Western blot	Immuno-fluorescence	Histochemistry (paraffin)	Histochemistry (frozen)
human	+++	ND	ND	ND
rat	+++	ND	ND	ND
mouse	+++	ND	ND	ND
canine	+++	ND	ND	ND
monkey	+++	ND	ND	ND

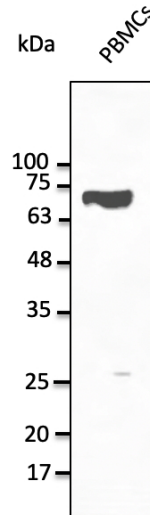
+++ excellent, ++ good, + poor, ND not determined

Usage: Western blot 1:500-1:2,000
Immunofluorescence ND
Immunohistochemistry (paraffin) ND
Immunohistochemistry (frozen) ND

Storage: Store at -20 C for long-term storage. Store at 2-8 C for up to one month.

Special instructions: Avoid freeze/thaw cycles.

References:



Anti-CD5 Ab at 1/1,000 dilution;
lysates at 50 µg per lane; rabbit
polyclonal to goat IgG (HRP) at
1/10,000 dilution;

For research use only, not for diagnostic use

SICGEN's Proprietary Immunogen Policy

In order to produce high specific antibodies SICGEN has invested a lot of time and effort into selecting immunogen sequences. SICGEN has decided to protect this information by not publishing it on the website. However, these sequences are available on request.