

Catalogue No.
Qty:

1.5 mg
600 µg

Anti-ATXN3

Source: Goat

General description: Goat polyclonal antibody to ATXN3. This protein appears to be a component of the ubiquitin proteasome system and has deubiquitinase activity. It may also have roles in neuroprotection, protein homeostasis maintenance, transcriptional and cytoskeleton regulation, myogenesis and degradation of misfolded chaperone substrates. The protein contains Qn repeats in the coding region, and the expansion of these repeats from the normal 13-36 to 68-79 is one cause of Machado-Joseph disease also known as spinocerebellar ataxia-3, an autosomal dominant neurologic disorder.

Alternative names: AT3, ATX3, ataxin-3, ataxin 3 variant h, autosomal dominant ataxin 3, ataxin 3 variant m, ataxin 3 variant ref, JOS, josephin, Machado-Joseph, Machado-Joseph disease protein 1, MJD, MJD1, SCA3, spinocerebellar ataxia 3, olivopontocerebellar ataxia 3, spinocerebellar ataxia type 3 protein antibody.

Form: Polyclonal antibody supplied as a 200 or 500 µl (3 mg/ml) aliquot in PBS. It does not contain preservatives. Glycerol and azide FREE. This antibody is epitope-affinity purified from goat antiserum.

Immunogen: Purified recombinant peptide derived from within residues 120 aa to 250 aa of human ATXN3 produced in E. coli.

Specificity: Detects levels of ATXN3 protein in transfected cells with GFP-ATXN3 and endogenous levels in U118, SH-SY5Y, At-T20 and hTERT cell lysates by Western blot. This Ab is similar to AB0089.

Reactivity: Reacts with Human, Rat, Mouse, Monkey and Canine proteins

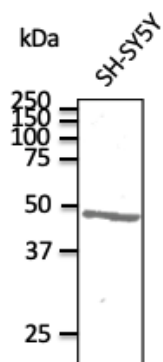
Sample	WB	IHC (F)	IHC (P)	IF	ELISA
Human	+++	ND	ND	ND	ND
Rat	+++	ND	ND	ND	ND
Mouse	+++	ND	ND	ND	ND
Canine	+++	ND	ND	ND	ND
Monkey	+++	ND	ND	ND	ND

Usage:

WB: 1:250-1:2,000

Storage: For continuous use, store at 2-8 C for one-two days. For extended storage, store in -20 C freezer. Working dilution samples should be discarded if not used within 12 hours.

Special instructions: The antibody solution should be gently mixed before use..



Anti-ATXN3 Ab at 1/500 dilution; lysates at 100 µg per lane; rabbit polyclonal to goat IgG (HRP) at 1/10,000 dilution;

For research use only, not for diagnostic use

SICGEN's Proprietary Immunogen Policy

In order to produce high specific antibodies SICGEN has invested a lot of time and effort into selecting immunogen sequences. SICGEN has decided to protect this information by not publishing it on the website. However, these sequences are available on request.