

**Catalogue No.**

**Qty:**

300 µg

## Anti-RFP

**Source:** Goat

**General description:** Goat polyclonal antibody to RFP (Red fluorescent protein). RFP is derived from DsRed, an engineered red fluorescent protein from so-called disc corals of the genus *Discosoma*.

**Alternative names:** Cherry fluorescent protein; dsRed, red fluorescent protein, tdTomato antibody.

**Form:** Polyclonal antibody supplied as a 100 µl (3 mg/ml) aliquot in PBS, 20% glycerol and 0.05% sodium azide. This antibody is epitope-affinity purified from goat antiserum.

**Immunogen:** Purified recombinant RFP peptide produced in *E. coli*.

**Specificity:** In 293HEK cells transfected with cds plasmid detects a band of 29 kDa by Western blot. This antibody also recognizes very well tdTomato and does not cross-react to GFP (green fluorescent protein).

**Reactivity:** Reacts with Transfected cells proteins

Sample	WB	IHC (F)	IHC (P)	IF	ELISA	IEM
Transfected cells	+++	+++	+++	+++	ND	+++

+++ excellent, ++ good, + poor, ND not determined

**Usage:**

WB: 1:500-1:2,000

IHC (F): 1:50-1:500

IHC (P): 1:50-1:500

IF: 1:50-1:500

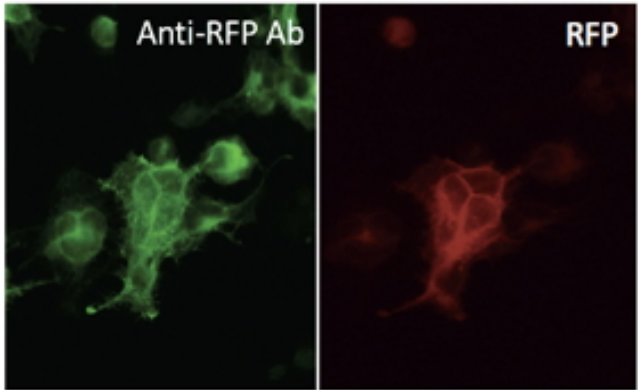
ELISA: ND

**Storage:** For continuous use, store at 2-8 C for one-two days. For extended storage, store in -20 C freezer. Working dilution samples should be discarded if not used within 12 hours.

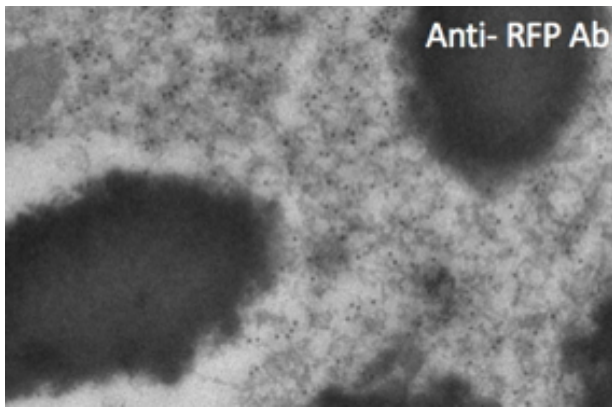
**Special instructions:** The antibody solution should be gently mixed before use..

**References:**

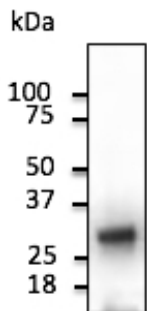
1. Tan Z, Kong M, Wen S, et al. J Bone Miner Res 2020 Jul. PMID: 32662900
2. Endo T, Kadoya K, Suzuki Y, et al. Front Cell Neurosci 2019 Jun. PMID: 31316351
3. Jiang D, Correa-Gallegos D, Christ S, et al. Nature Cell Biology 2018 Apr. PMID: 29593327
4. Tian DS, Peng J, Murugan M, et al. J Neurosci 2017 Aug. PMID: 28716963
5. Semerci F, Choi WT, Bajic A, et al. Elife 2017 Jul PMID: 28699891



Immunofluorescence – anti-RFP Ab in 293HEK cells transfected with RFP at 1/50 dilution; cells were fixed with 4% of PFA;



Immunogold labeling of epithelium cells, in vivo injected with RFP expressing vector;



Anti-RFP Ab at 1/2,000 dilution; 293HEK cells transduced with RFP Ad; lysates at 50 µg per lane; rabbit polyclonal to goat IgG (HRP) at 1/10,000 dilution;

For research use only, not for diagnostic use

**SICGEN's Proprietary Immunogen Policy**

In order to produce high specific antibodies SICGEN has invested a lot of time and effort into selecting immunogen sequences. SICGEN has decided to protect this information by not publishing it on the website. However, these sequences are available on request.