

Datasheet



Mouse mAb to **MHC I ABC**
Clone **Bra23/9**
Isotype **IgG2a-κ**

Source

A BALB/c mouse was immunized with non-T, non-B human acute lymphoblastic leukemia REH6 cells.
Fusion partner: NS-1.

Specifications

Bra23/9 reacts with a monomorphic determinant of human major histocompatibility (MHC) class I antigens (HLA-A, B and C). Human MHC class I antigens are expressed constitutively on all nucleated cells and platelets and are absent on erythrocytes. MHC class I antigens play a role in class I MHC-associated antigen presentation, inhibition of NK cell cytotoxicity, tumor surveillance, and tissue allotransplantation.

Species reactivity

Positive: human.

Applications

Demonstration of MHC I A, B, C.

Frozen sections	Flow cytometry	ELISA	Immunoprecipitation
+	+	+	+

Format

Produced in tissue culture, contains no host Ig. Antibodies are affinity purified and presented in PBS with 0,02 % sodium azide.

Stored at 4°C- 8°C, shelf life is at least 24 months after purchase.

Dilution advice

- Flow cytometry (0,5-1,0 µg/million cells in 0,1 ml).
- ELISA (solid phase: 0,1-100 µg/ml; tracer: 0,001-100 µg/ml for 30 min at RT)
- Immunoprecipitation (1-2 µg per 100-500 µg cell lysate protein/1 ml of anti-mouse coated Sepharose-4B suspension).
- Immunohistology (1-2 µg/ml for 30 min at RT; an appropriate antigen retrieval method for staining of formalin-fixed tissues has not been established to date).

Positive control

THP-1 and Jurkat cells. Tonsil or lymph node.

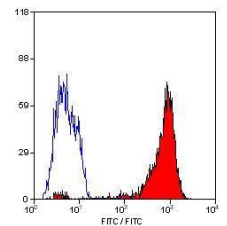


Figure 1: Human PBL stained for HLA ABC (FACS)

Datasheet



References

- Chorváth et al., *Neoplasma* **35(5)**: 495-501 (1988).
- Plesková et al., *Neoplasma* **35(6)**: 657-664 (1988).
- Chorváth et al., *Neoplasma* **37(3)**: 317-331 (1990).