

Datasheet



Mouse mAb to **MHC I**
Aw32+A25
Clone **CATA-1**
Isotype **IgG2a-κ**

Source

A BALB/c mouse was immunized with human PBL of phenotype A1, Aw32, B7, B37, CW-,CW-,DR2, DRw10.
Fusion partner: NS-1.

Specifications

CATA-1 reacts with cells bearing HLA-A25 or HLA-Aw32 antigens. In addition, a reaction was observed with a cell of phenotype A2, Aw31; B17, Bw49.

Species reactivity

Positive: human.

Applications

CATA 1 is excellent for typing peripheral T-cells for HLA-Aw32 and HLA-A25.

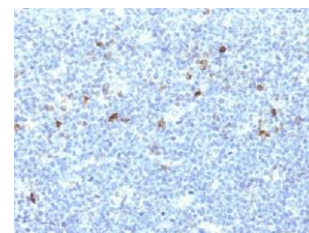


Figure 1: Human tonsil stained with CATA-1 (paraffin)

Flow cytometry	Frozen sections	Paraffin sections
+	+	Citrate

Format

Produced in tissue culture, contains no host Ig. Antibodies are affinity purified and presented in PBS with 0,02 % sodium azide.

Stored at 4°C- 8°C, shelf life is at least 24 months after purchase.

Dilution advice

- Flow cytometry (0,5-1,0 µg/million cells in 0,1 ml).
- Immunohistology (1-2 µg/ml for 30 min at RT; staining of formalin-fixed tissues requires boiling tissue sections in 10mM citrate buffer, pH 6.0, for 10-20 min followed by cooling at RT for 20 minutes).

Positive control

THP-1 and Jurkat cells. Tonsil or lymph node.

References

- Vilella, R. et al. *Human Immunol.* **6:** 53-62 (1983).