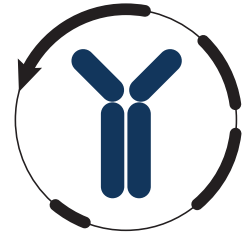


Datasheet



Mouse mAb to **CD33 / SIGLEC3**
Clone **33-20**
Isotype **IgG1-κ**

Source

A BALB/c mouse was immunized with stimulated human AML cells.
Fusion partner: NS-1.

Specifications

CD33 is a 67 kDa glycoprotein of the sialic acid-binding immunoglobulin-like lectin (SIGLEC) family, displaying the immune-receptor tyrosine-based inhibitory motif (ITIM), able of recruiting protein tyrosine phosphatases SHP-1 and SHP-2 to signal assemblies. ITIMs are also used for ubiquitin-mediated removal of the receptor from the cell surface. CD33 is expressed on cells of myelomonocytic lineage, binds sialic acid residues in N- and O-glycans on cell surfaces, and is a therapeutic target for acute myeloid leukemia. CD33 is expressed on myeloid progenitors, monocytes, granulocytes, dendritic cells and mast cells. It is absent on platelets, lymphocytes, erythrocytes and hematopoietic stem cells.

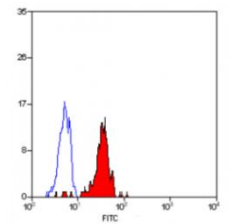


Figure 1: Human PBL stained for CD33 (FACS).

Species reactivity

Positive: human.

Applications

Demonstration of CD33 in frozen sections, flow cytometry and immunofluorescence.

Flow cytometry	Frozen sections	Immunofluorescence
+	+	+

Format

Produced in tissue culture, contains no host Ig. Antibodies are affinity purified and presented in PBS with 0,02% sodium azide.

Stored at 4°C-8°C, shelf life is at least 24 months after purchase.

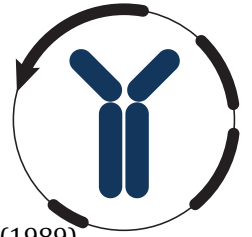
Dilution advice

- Flow cytometry (1-2 µg/million cells in 0,1 ml for 30 min, at 4°C).
- Immunofluorescence (1-2 µg/ml).
- Immunohistology (1-2 µg/ml for 30 min at RT; no antigen retrieval procedure is known to date for formalin-fixed tissues).

Positive control

Human dendritic and mast cells. Human lymph node and tonsil.

Datasheet



References

- Knapp W. et al. Leucocyte typing IV, p. 408- 411 and p. 1080, Oxford University Press, Oxford (1989).
- Favaloro EJ et al, *Dis Markers* **5(4)**:215-25 (1987).
- Favaloro EJ et al, *Br J Haematol* **69(2)**:163-71 (1988).