

Datasheet



Mouse mAb to **CD26**
Clone **EBS-CD-019**
Isotype **IgM-κ**

Source

A BALB/c mouse was immunized with synthetic peptide from the amino terminal region of CD26.
Fusion partner: SP2/0.

Specifications

EBS-CD-019 reacts with human CD26 (Dipeptidyl peptidase IV), a 110 kDa protein which occurs in the cell membrane of t-lymphocyte and is upregulated after activation. CD26 is also present on endothelial cells and also expressed on inactivated B-cells and natural killer cells and abundantly on epithelia. CD26 is implicated in a variety of biological functions including T-cell activation, cell adhesion with extracellular matrix such as fibronectin or collagens, and in HIV infection.

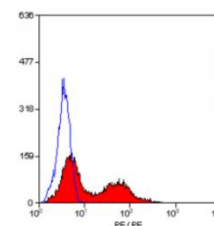


Figure 1: Human PBL stained for CD26 (FACS).

Species reactivity

Positive: human.

Applications

EBS-CD-019 can be used in frozen sections, flow cytometry, immunofluorescence and immunoblotting.

Flow cytometry	Frozen sections	Immunofluorescence	Paraffin sections	Western blot
+	+	+	-	+

Format

Produced in tissue culture, contains no host Ig. Antibodies are affinity purified and presented in PBS with 0,02% sodium azide.

Stored at 4°C-8°C, shelf life is at least 24 months after purchase.

Dilution advice

- Flow cytometry (0,5-1,0 µg/million cells in 0,1 ml).
- Immunoblotting (1-2 µg/ml).
- Immunofluorescence (0,5-1,0 µg/ml).
- Immunohistology (1-2 µg/ml for 30 min at RT; an appropriate antigen retrieval method for staining of formalin-fixed tissues has not been established to date).

Positive control

Human PBL or tonsil.

Datasheet



References

- Fleischer B. Immunol Today 15(4): 180-184 (1994).
- Abbott CA. et. al. Immunogenetics, 40: 331-338 (1994).
- Valenzuela A et. al. Adv Exp Med Biol, 421: 185-192 (1997).
- Cheng HC, et al. J Biol Chem. 273(37): 24207-24015 (1998).