

# Datasheet



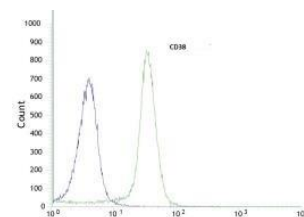
Mouse mAb to **CD38**  
Clone **EBS-CD-025**  
Isotype **IgG1-κ**

## Source

A BALB/c mouse was immunized with the human T-cell line CCRF-CEM.  
Fusion partner: SP2/0.

## Specifications

EBS-CD-025 reacts with a 45 kDa glycopeptide which is a type II membrane glycoprotein with a transmembrane sequence near the regulation of lymphocyte adhesion to endothelial cells. Its ligand is CD31. CD38 is found on early cells of B and T lineages and on activated B- and t-cells. It is not found on most mature resting peripheral lymphocytes. Also positive are thymus cells and Ig secreting plasma cells. The CD34<sup>+</sup> and CD38<sup>-</sup> population of hematopoietic stems cells defines the most pluripotent cells (e.g. blast colony forming cells). EBS-CD-025 antibody blocks the EBS-CD-026 epitope, and vice versa.



**Figure 1:** Human HeLa cells labelled with anti CD38 (FACS).

## Species reactivity

Positive: human.

## Applications

Subtyping of lymphomas and leukemias (many ALL's, some AML's). Detection of plasma cells (myelomas). Marker for B- and T-cell activation by flow cytometry and immunohistology.

Flow cytometry	Frozen sections	Immunofluorescence	Paraffin sections
+	+	+	-

## Format

Produced in tissue culture, contains no host Ig. Antibodies are affinity purified and presented in PBS with 0,02% sodium azide.

Stored at 4°C-8°C, shelf life is at least 24 months after purchase.

## Dilution advice

- Flow cytometry (0,5-1,0 µg/million cells in 0,1 ml).
- Immunofluorescence (0,5-1,0 µg/ml).
- Immunohistology (2-4 µg/ml for 30 min at RT; an antigen retrieval method for formalin-fixed tissues is unavailable for this antibody).

## Positive control

CCRF-CEM cells, tonsil, spleen or skin.

## References

- Deaglio, S., et. al. *J Immunol.* **160(1)**: 395-402 (1998).