

Datasheet



Mouse mAb to **CD38**
Clone **EBS-CD-026**
Isotype **IgG3-κ**

Source

A BALB/c mouse was immunized with the human T-cell line CCRF-CEM.
Fusion partner: SP2/0.

Specifications

EBS-CD-026 reacts with a 45 kDa glycopeptide which is a type II membrane glycoprotein with a transmembrane sequence near the NH2 terminus, involved in the regulation of lymphocyte adhesion to endothelial cells. Its ligand is CD31. CD38 is found on early cells of B and T lineages and on activated T- and B-cells. It is not found on most mature resting peripheral lymphocytes. Also positive are thymus cells and Ig secreting plasma cells. The CD34+ and CD38- population of hematopoietic stems cells defines the most pluripotent cells (e.g. blast colony forming cells). EBS-CD-026 antibody blocks the EBS-CD-025 epitope, and vice versa.

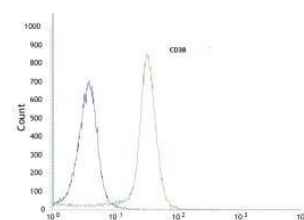


Figure 1: Human HeLa cells labelled with anti CD38 (FACS).

Species reactivity

Positive: human.

Applications

Subtyping of lymphomas and leukemias (many ALL's, some AML;s). Detection of plasma cells (myelomas). Marker for B- and T-cell activation by flow cytometry and immunohistology.

| Flow cytometry | Frozen sections | Immunofluorescence | Paraffin sections |
|----------------|-----------------|--------------------|-------------------|
| + | + | + | - |

Format

Produced in tissue culture, contains no host Ig. Antibodies are affinity purified and presented in PBS with 0,02% sodium azide.

Stored at 4°C-8°C, shelf life is at least 24 months after purchase.

Dilution advice

- Flow cytometry (0,5-1,0 µg/million cells in 0,1 ml).
- Immunofluorescence (0,5-1,0 µg/ml).
- Immunohistology (2-4 µg/ml for 30 min at RT; an antigen retrieval method for formalin-fixed tissues is unavailable for this antibody).

Positive control

CCRF-CEM cells, tonsil, spleen or skin.

References

- Deaglio, S., et. al. *J Immunol.* **160(1)**: 395-402 (1998).