

Datasheet



Mouse mAb to **CD56**
Clone **EBS-CD-032**
Isotype **IgG1-κ**

Source

A BALB/c mouse was immunized with a crude membrane preparation of a small cell lung cancer.
Fusion partner: SP2/0.

Specifications

EBS-CD-032 reacts with an extracellular domain (close to the cell membrane) of CD56/NCAM. Three isoforms of NCAM are produced by differential splicing of the RNA transcript from a single gene. The 135 kDa isoform is the basic molecule, which is glycosylated or sialylated to produce the mature species of 180 kDa and 145 kDa. The 125 kDa isoform is not recognized by EBS-CD-032. EBS-CD-032 recognizes NCAM in retinoblastoma, medulloblastomas, astrocytomas, neuroblastomas, and small cell lung carcinomas. NCAM is also expressed on some mesodermally derived tumors (a.o. rhabdomyosarcoma). Anti-CD56 plays an important role in the diagnosis of nodal and nasal NK/T-cell lymphomas.

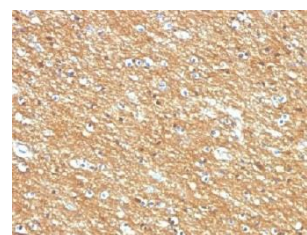


Figure 1: Human brain tumor stained with EBS-CD-032 (paraffin).

Species reactivity

Positive: human.

Applications

Differential diagnosis of neuroectodermally derived tumors like small cell lung cancer and NK/T-cell lymphomas.

ELISA	Flow cytometry	Frozen sections	Immunofluorescence	Paraffin sections	Western blotting
+	+	+	+	Citrate	+

Format

Produced in tissue culture, contains no host Ig. Antibodies are affinity purified and presented in PBS with 0,02% sodium azide.

Stored at 4°C-8°C, shelf life is at least 24 months after purchase.

Dilution advice

- ELISA (solid phase: not known; tracer: 0,001-100 µg/ml for 30 min at RT).
- Flow cytometry (0,5-1,0 µg/million cells in 0,1 ml).
- Immunoblotting (1-2 µg/ml).
- Immunofluorescence (0,5-1,0 µg/ml).
- Immunohistology (formalin-fixed: 1-2 µg/ml for 30 min at RT; staining of formalin-fixed tissues requires boiling tissue sections in 10mM citrate buffer, pH 6,0, for 10-20 min followed by cooling at RT for 20 minutes).

Positive control

Cerebellum, pancreas, neuroblastoma.

Datasheet



References

- Schol DJ. et al, *Int. J. Cancer* **Suppl.2**: 35-40 (1988).
- Moolenaar KE. et al, *Cancer Res.* **50**: 1102-1106 (1990).
- Mooi WJ. et al, *Mol. and Cel. Probes* **2**: 31-37 (1988).
- Kibbelaar RE. et al, *Eur J Cancer* **27(4)**: 431-5 (1991).
- Skov BG. et al, *Br J Cancer* **Suppl. 14**: 46-8 (1991).
- Brezicka FT. et al, *APMIS.* **99(9)**: 797-802 (1991).
- Gerardy-Schahn R. et al. *Int J Cancer* **Suppl. 8**: 38-42 (1994).
- Kaufman O. et al, *Hum. Pathol.* **28(12)**: 1373-1378 (1997).
- Kwa HB. et al. *Br. J. Cancer* **73**: 439-446 (1996).
- Tsang WY. et al, *Am. J. Surg. Pathol.* **20(2)**: 202-210 (1996).
- Lantuéjoul S. et al, *Hum. Pathol.* **31(4)**: 415-21 (2000).
- Takaku H. et al. *Am J Gastroenterol.* **94(5)**: 1402-4 (1999).
- Michalides R. et al. *Int. J. Cancer* **Suppl. 8**: 34-7 (1994).
- Beverly et al, *Lung Cancer* **4**: 15-36 (1988).
- Souhami RL. et al, *Lancet* **2**: 325-326 (1987).
- Christopher MG. et al, *Cytojournal* **8**: 7 (2011).
- Langdon SP. et al. *Cancer Res.* **48(21)**: 6161-65 (1988).
- Langdon SP. et al. *Cancer Res.* **48(21)**: 6166-72 (1988).