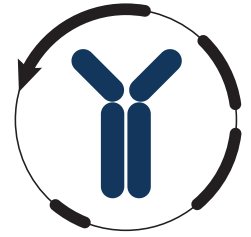


Datasheet



Mouse mAb to **CD86**
Clone **EBS-CD-042**
Isotype **IgG1-κ**

Source

A BALB/c mouse was immunized with ARH-77 cells (B-lymphoblastoid cell line).
Fusion partner: P3x63-Ag8.653.

Specifications

EBS-CD-42 reacts with CD86, a member of the immunoglobulin superfamily, and highly expressed on monocytes, dendritic cells and stimulated B-cells. It is probably the major CD28 ligand. Furthermore, EBS-CD-042 blocks binding of soluble CD152 to CD86.

Species reactivity

Positive: human, mouse, rat.

Applications

EBS-CD-042 can be used on frozen sections, immunofluorescence, flow cytometry and in functional studies. It is found on malignant Hodgkin and Reed Sternberg cells in Hodgkin's disease.

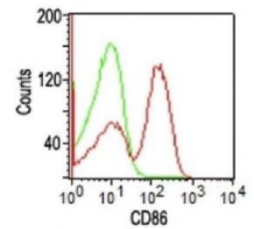


Figure 1: Human PBMC flow cytometry analysis with EBS-CD-042.

Flow cytometry	Frozen sections	Immunofluorescence	Functional studies
+	+	+	+

Format

Produced in tissue culture, contains no host Ig. Antibodies are affinity purified and presented in PBS with 0,02% sodium azide.

Stored at 4°C-8°C, shelf life is at least 24 months after purchase.

Dilution advice

- Flow cytometry (0,5-1,0 µg/million cells in 0,1 ml).
- Immunofluorescence (0,5-1,0 µg/ml).
- Functional studies ((0.02-2µg/ml without azide)
- Immunohistology (1-2 µg/ml for 30 min at RT; an antigen retrieval method for formalin-fixed tissues is unavailable for this antibody).

Positive control

293T or Jurkat cells. Monocytes and dendritic cells, activated T, B and natural killer cells in lymph node or tonsil.

Datasheet



References

- Giguère JF et al, *J Virol* **78**: 6222-32 (2004).
- Mauri D et al, *J Immunol* **155**: 118-27 (1995).
- Leukocyte Typing V, Schlossman S. et al. (Eds.), Oxford University Press (1995).
- Leukocyte Typing VI, Kishimoto T. et al. (Eds.), Garland Publishing Inc. (1997).
- Sandilands GP et al, *Immunology* **108**: 329-337 (2003).