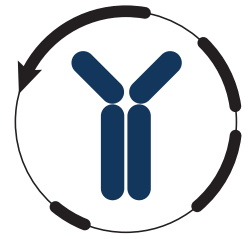


Datasheet



Mouse mAb to **MAP3K1**
Clone **EBS-T-008**
Isotype **IgG2a-κ**

Source

A BALB/c mouse was immunized with partial recombinant MAP3K1 (aa1211-1310).
Fusion partner: Sp2/0.

Specifications

MAPKs are involved in directing cellular responses to a diverse array of potentially harmful stimuli, such as mitogens, osmotic stress, heat shock, proinflammatory cytokines, but also growth factors (mammals). Possibly located exclusively in the cell nucleus, they regulate cell functions including proliferation, gene expression, differentiation, mitosis, cell survival, and apoptosis. In order to become active, they require usually multiple phosphorylation events in their activation loops, including phosphorylation by MAP2 kinases (Ste-7 kinases), which in turn are phosphorylated by the MAP3 kinase family, of which many are located at the cell membrane. Thus through this pathway, stimuli can effectively be conveyed from the cell membrane to the nucleus. Inactivation of MAPKs takes place by several phosphatases, including dedicated phosphatases.

Species reactivity

Positive: human.

Applications

EBS-T-008 can be used on paraffin sections, flow cytometry, ELISA, and Western blot.

| ELISA | Flow cytometry | Frozen sections | Immunofluorescence | Paraffin sections | Western blot |
|-------|----------------|-----------------|--------------------|-------------------|--------------|
| + | + | + | + | Tris/EDTA | + |

Format

Produced in tissue culture, contains no host Ig. Antibodies are affinity purified and presented in PBS with 0,02 % sodium azide.

Stored at 4°C- 8°C, shelf life is at least 24 months after purchase.

Dilution advice

- ELISA (solid phase: 0,1-100 µg/ml; tracer: 0,001-100 µg/ml for 30 min at RT).
- Flow Cytometry (0,5-1 µg/million cells in 0.1 ml).
- Immunoblotting (0,5-1 µg/ml).
- Immunohistology (0,5-1,0 µg/ml for 30 minutes at RT; Staining of formalin-fixed tissues requires boiling tissue sections in 10mM Tris with 1mM EDTA, pH 9.0, for 10-20 min followed by cooling at RT for 20 minutes).

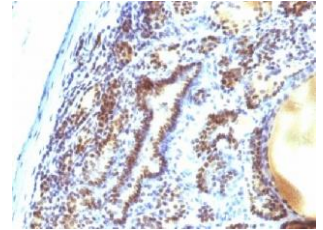


Figure 1: Human thyroid carcinoma stained with EBS-T-008 (paraffin)

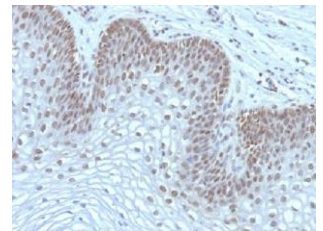


Figure 2: Human cervical cancer stained with EBS-T-008 (paraffin)

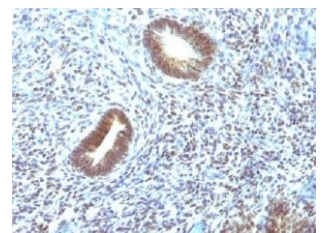


Figure 3: Human uterine carcinoma stained with EBS-T-008 (paraffin)

Datasheet



Positive control

A431, HeLa or HL-60 cells or liver tissue.

References

- Guan, KL. et al, *Cell. Signal.* **6**: 581-589 (1994).