

Datasheet



Mouse mAb to **PSA**
Clone **EBS-T-231**
Isotype **IgG1-κ**

Source

A BALB/c mouse was immunized with a p30 enriched preparation of human sperm plasma.
Fusion partner: P3-X63-Ag8.653.

Specifications

EBS-T-231 recognizes PSA as p30 in ELISA and Western blots. Makes excellent pair with 1A7G6B6 for PSA tumor marker tests, including rapid tests. EBS-T-231 was typed at the ISOBM TD-3 workshop.

Species reactivity

Positive: human.

Applications

EBS-T-231 is excellent for PSA tumor marker tests, in combination with 1A7G6B6 antibody. It is further used for immunohistochemistry and also works well in Western blots.

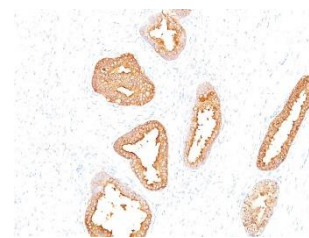


Figure 1: Prostate carcinoma stained with EBS-T-231 (paraffin)

ELISA	Flow cytometry	Frozen sections	Immunofluorescence	Paraffin sections	Rapid test	Western blot
+	+	+	+	Citrate	+	+

Format

Produced in tissue culture, contains no host Ig. Antibodies are affinity purified and presented in PBS with 0,02 % sodium azide.

Stored at 4°C- 8°C, shelf life is at least 24 months after purchase.

Dilution advice

- ELISA (solid phase: 0,1-100 µg/ml; tracer: 0,001-100 µg/ml for 30 min at RT).
- Flow Cytometry (0,5-1,0 µg/million cells in 0,1 ml).
- Immunoblotting (1 µg/ml for 2h at RT).
- Immunofluorescence (0,5-1,0 µg/ml).
- Immunohistology (formalin-fixed: 1-2 µg/ml for 30 min at RT; requires boiling tissue sections in 10mM citrate buffer, pH 6,0, for 10-20 min followed by cooling at RT for 20 minutes).
- Rapid test (either coated to the strip, or as labeled conjugate).

Positive control

Prostate or prostate carcinoma.

References

- ISOBM - TD-3 (PSA) Workshop report: Tumour Biol. 20 Suppl. 1 (1999).