

Datasheet



Mouse mAb to **Liver Antigen**
Clone **EP-1**
Isotype **IgG2b-κ**

Source

A BALB/c mouse was immunized with SK-H1A9-2 human hepatocarcinoma cells.
Fusion partner: NS-1.

Specifications

Monoclonal antibody EP-1 stains human liver canaliculi and a subset of hepatocellular carcinomas.

Species reactivity

Positive: human.

Applications

Monoclonal antibodies to liver cell antigens are useful in the identification of hepatic carcinomas.

Flow cytometry	Frozen sections	Immunofluorescence	Paraffin sections
+	+	+	-

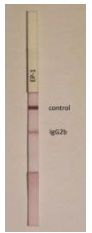


Figure 1: Isostrip showing IgG2b isotype of EP-1

Format

Produced in tissue culture, contains no host Ig. Antibodies are affinity purified and presented in PBS with 0,02 % sodium azide.

Stored at 4°C- 8°C, shelf life is at least 24 months after purchase.

Dilution advice

- Flow cytometry (0.5-1.0 µg/million cells in 0.1 ml).
- Immunofluorescence (0.5-1,0 µg/ml).
- Immunohistology (1-2 µg/ml for 30 min at RT; an appropriate antigen retrieval method for staining of formalin-fixed tissues has not been established to date).

Positive control

Liver.

References

- This antibody has not been published.