

Datasheet



Mouse mAb to **Anti-Macrophage
Mouse Monoclonal
Antibody**
Clone **EP-3**
Isotype **IgM-κ**

Source

A BALB/c mouse was immunized with human thymus.
Fusion partner: NS-1.

Specifications

Monoclonal antibody EP-3 recognizes an antigen associated with the cytoplasm of human macrophages resident in the thymus and other lymphoid tissues.
Monoclonal antibody EP-3 produces a strong cytoplasmic staining pattern of cortical thymic macrophages in formalin fixed, paraffin embedded tissues specimens. It may therefore be used as a marker of this cell type and of tumors derived from the macrophage.

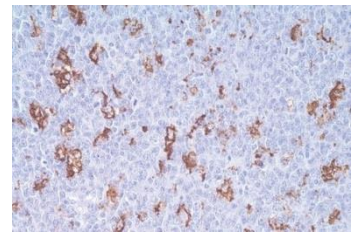


Figure 1: Human tonsil stained for macrophages (paraffin)

Species reactivity

Positive: human.

Applications

Monoclonal antibody EP-3 can be used to stain cortical thymic macrophages and macro phages in lymphoid and non-lymphoid tissues using routinely fixed and embedded tissues.

Flow cytometry	Frozen sections	Immunofluorescence	Paraffin sections
-	+	+	+

Format

Produced in tissue culture, contains no host Ig. Antibodies are affinity purified and presented in PBS with 0,02% sodium azide.

Stored at 4°C-8°C, shelf life is at least 24 months after purchase.

Dilution advice

- Immunofluorescence (0,5-1,0 µg/ml).
- Immunohistology (1-2 µg/ml for 30 min at RT; staining of formalin-fixed tissues better after boiling tissue sections in 10mM Citrate Buffer, pH6,0 , for 10-20 min followed by cooling at RT for 20 minutes).

Positive control

Thymus, tonsil.

References

- Fleming MG, et al, *J Cutan Pathol.* **17(2)**: 77-81 (1990).