

Datasheet



Mouse mAb to **CD31 (PECAM-1)**
Clone **FS12**
Isotype **IgG1-κ**

Source

A BALB/c mouse was immunized with stimulated human leucocytes.
Fusion partner: NS-1.

Specifications

FS12 reacts with CD31 (PECAM-1), a 130-140 kDa member of the immunoglobulin gene superfamily that is expressed on cells of the vasculature, including platelets, endothelial cells, myeloid cells and certain lymphocyte subsets.

Species reactivity

Positive: human.

Applications

FS12 can be used in frozen sections, flow cytometry and immunofluorescence.

Flow cytometry	Frozen sections	Immunohistology	Paraffin sections
+	+	+	-

Format

Produced in tissue culture, contains no host Ig. Antibodies are affinity purified and presented in PBS with 0,02% sodium azide.
Stored at 4°C-8°C, shelf life is at least 24 months after purchase.

Dilution advice

- Flow cytometry (0,5-1,0 µg/million cells in 0,1 ml).
- Immunofluorescence (0,5-1,0 µg/ml).
- Immunohistology (1-2 µg/ml for 30 min at RT; an appropriate antigen retrieval method for staining of formalin-fixed tissues has not been established to date).

Positive control

Human PBL or tonsil.

References

- Kishimoto T. et al., eds. Leukocyte Typing VI, Garland Publishing, Inc, New York and London, (1997).
- Sandilands, G. et al. Clin. and Exp. Immunology, 162(3): 516-27 (2010).

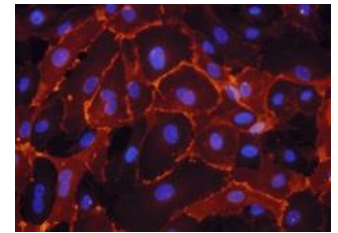


Figure 1: HUVEC stained for CD31 (IFA).

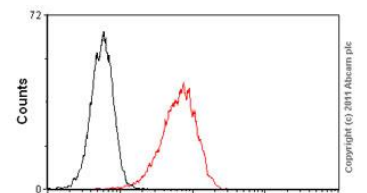


Figure 2: Jurkat cells stained for CD31 (FACS).