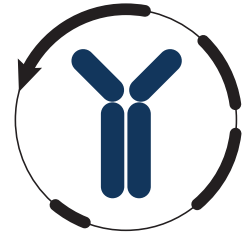


# Datasheet



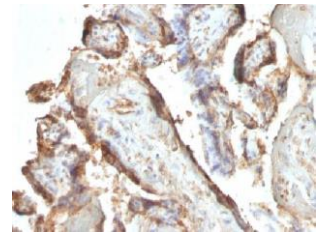
Mouse mAb to **hCG Holo**  
Clone **HCGh25**  
Isotype **IgG1-κ**

## Source

A BALB/c mouse was immunized with purified hCG.  
Fusion partner: SP-2/0.

## Specifications

HCGh25 is very special because it reacts ONLY with intact-hCG and not with either free alpha- or free beta-chain of hCG. hCG is a glycoprotein composed of two non-identical, non-covalently linked polypeptide chains. The alpha subunit is identical among hCG, TSH, FSH and LH. While hCG is secreted in large quantities by normal trophoblasts, it is present only in trace amounts in non-pregnant urine and sera but rises sharply during pregnancy. Besides trophoblastic tumors e.g. choriocarcinoma, large cell carcinoma, adenocarcinoma and squamous cell carcinoma of the lung are also positive in 90%, 60% and 20% of cases respectively. hCG expression by non-trophoblastic tumors may indicate aggressive behavior.



**Figure 1:** Human placenta stained with HCGh25 (paraffin)

## Species reactivity

Positive: human.

## Applications

Pregnancy and oncology.

Frozen sections	Paraffin sections
+	Citrate

## Format

Produced in tissue culture, contains no host Ig. Antibodies are affinity purified and presented in PBS with 0,02 % sodium azide.

Stored at 4°C- 8°C, shelf life is at least 24 months after purchase.

## Dilution advice

- Immunohistology (1-2 µg/ml for 30 min at RT; staining of formalin-fixed tissues requires boiling tissue sections in 10mM citrate buffer, pH 6.0, for 10-20 min followed by cooling at RT for 20 minutes).

## Positive control

JAR or TT Cells. Placenta.

## References

- McDonald EA et. al. Endocrinology 150:4358-65 (2009).