

# Datasheet



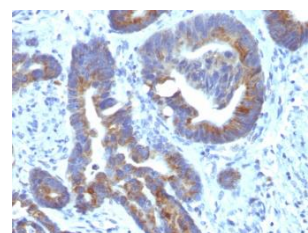
Mouse mAb to **Blood Group A (CD173)**  
Clone **HE-10**  
Isotype **IgM-κ**

## Source

A BALB/c mouse was immunized with a mixture of erythrocytes of blood group A1 and a glycoprotein fraction isolated from the saliva of secretors with blood group A of human origin.  
Fusion partner: P3-X63-Ag8.653.

## Specifications

HE-10 preferably reacts with determinants of chain A type 3 and 4 and chain H type 3 and 4, but not with type 1 and 2 chain structures. It is not reactive with immunodominant A trisaccharide. Increased expression of this antigen has been observed on some tumor tissues such as gastric carcinomas, urothelial carcinomas, and colon carcinomas. HE-10 does not react with normal tissue sections of donors with blood group B and 0 but it reacts specifically with malignant tissues in these individuals.



**Figure 1:** Human rectum stained with HE-10 (paraffin)

## Species reactivity

Positive: human.

## Applications

HE-10 is applicable for red cell agglutination, tissue staining and immunofluorescence tests.

Agglutination	Flow cytometry	Frozen sections	Immunofluorescence	Paraffin sections
+	+	+	+	Citrate

## Format

Produced in tissue culture, contains no host Ig. Antibodies are affinity purified and presented in PBS with 0,02% sodium azide.

Stored at 4°C- 8°C, shelf life is at least 24 months after purchase.

## Dilution advice

- Agglutination
- Flow cytometry (0,5–1,0 µg/million cells in 0,1 ml).
- Immunofluorescence (0,5–1 µg/ml).
- Immunohistology (formalin-fixed: 1-2 µg/ml for 30 min. at RT; requires boiling tissue sections in 10mM citrate buffer, pH 6,0, for 10-20 min followed by cooling at RT for 20 min).

## Positive control

KG1 cells or human colorectal carcinoma.

# Datasheet



## References

- Němec M. et al. *Vox Sang* **52**:125-8 (1987).
- Vanák J. et al. *Neoplasma* **36(4)**: 479-487 (1989).
- Tichý, M. et al. *Neoplasma* **37(4)**: 451-459 (1990).
- Tichý, M. et al. *Acta Univ Palacki Olomuc Fac Med.* **126**: 57-69 (1990).