

Datasheet



Mouse mAb to **MHC I B**
Clone **JOAN-1**
Isotype **IgG1-κ**

Source

A BALB/c mouse was immunized with human PBL.
Fusion partner: NS-1.

Specifications

JOAN-1 recognizes an intralocus determinant present on a limited number of HLA-B locus-encoded gene products.

Species reactivity

Positive: human, mouse.

Applications

JOAN-1 is applicable for typing peripheral blood cellular types (T-cells, B-cells, macrophages, granulocytes and platelets) as well as with a large number of leukemic cell lines.

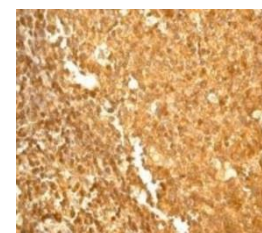


Figure 1: Human Tonsil Stained for HLA-B (frozen)

Flow cytometry	Frozen sections
+	+

Format

Produced in tissue culture, contains no host Ig. Antibodies are affinity purified and presented in PBS with 0,02 % sodium azide. Stored at 4°C- 8°C, shelf life is at least 24 months after purchase.

Dilution advice

- Flow cytometry (0,5-1,0 µg/million cells in 0,1 ml).
- Immunofluorescence (0,5-1,0 µg/ml).
- Immunohistology (1-2 µg/ml for 30 min at RT; an appropriate antigen retrieval method for staining of formalin-fixed tissues has not been established to date).

Positive control

Human peripheral blood lymphocytes, tonsil or lymph node.

Datasheet



References

- Ryschich, E, et al, *Clin Cancer Res.* **11(2 Pt 1)**: 498-504 (2005).
- Goodall, JC, et al, *Arthritis Rheum.* **54(1)**: 138-47 (2006).
- Park, B, et al, *J Immunol.* **170(2)**: 961-8 (2003).
- Sun, JY, et al, *Cancer Immunol Immunother* **52(12)**: 761-70. (2003).
- Ryschich, E, et al, *Tissue Antigens.* **64(6)**: 696-702 (2004).
- Guerreiro-Cacais AO, et al, *J Virol.* **81(3)**: 1390-400 (2007).
- Hühn MH, et al, *Cell Microbiol.* **10(2)**: 426-36 (2008).
- Zal B, et al, *J Immunol.* **181(8)**: 5233-41(2008).