

# Datasheet



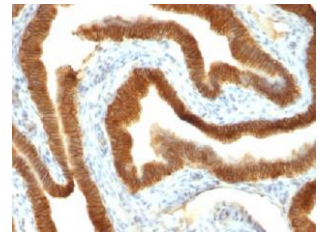
Mouse mAb to **CD326 (Ep-CAM)**  
Clone **VU-1D9**  
Isotype **IgG1-κ**

## Source

A BALB/c mouse was immunized with NCI-H69 SCLC cells.  
Fusion partner: Sp2/0.

## Specifications

Ep-CAM (also called ESA, EGP40, 17-1A antigen, KSA, GA7333-2) is a 40 kDa epithelial protein expressed on baso-lateral cell surfaces in very many epithelial tissues (but absent from mesothelial tissues). The 324AA have 3 potential glycosylation sites and is a transmembrane glycoprotein. The extracellular domain has a cysteine-rich repeat and a small domain with homology to nidogen. It is a homophilic cell-cell adhesion molecule (Ep-CAM). VU-1D9 reacts with most epithelial cells and carcinomas.



**Figure 1:** Ovarian cancer stained with VU-1D9 (paraffin).

## Species reactivity

Positive: cow, human.  
Negative: ferret, rat.

## Applications

It is the antibody of choice to differentiate between mesothelioma and carcinoma.

Flow cytometry	Frozen sections	Immunofluorescence	Paraffin sections
+	+	+	Citrate

## Format

Produced in tissue culture, contains no host Ig. Antibodies are affinity purified and presented in PBS with 0,02% sodium azide.

Stored at 4°C-8°C, shelf life is at least 24 months after purchase.

## Dilution advice

- Flow cytometry (0,5-1,0 µg/million cells in 0,1 ml).
- Immunofluorescence (0,5-1,0 µg/ml).
- Immunohistology (1-2 µg/ml for 30 min at RT; staining of formalin-fixed tissues requires boiling tissue sections in 10mM citrate buffer, pH 6.0, for 10-20 min followed by cooling at RT for 20 minutes).

## Positive control

HT29 cells or breast tumor.

# Datasheet



## References

- Tsubura et al, *J. Cutan. Pathol.* **19**: 73 (1992).
- Herlyn et al, *Hybridoma Suppl* **5**: S3-S8 (1986).
- Szala et al, *Proc. Nat. Acad. Sci. USA*, **87**: 3542-3546 (1990).
- Litvinov et al, *J. Cell. Biol.* **125**: 437-446 (1994).
- Gaffey et al, *Amer. J. Surg. Pathol.* **16**: 593-599 (1992).
- Tandon et al, *Cancer Res.* **50**: 3317-3321 (1990).
- Simon et al, *Proc. Nat. Acad. Sci. USA*, **87**: 2755-2759 (1990).
- Perez and Walker, *J. Immunol.* **142**: 3662-3667 (1989).
- Latza et al, *J. Clin. Pathol.* **43**: 213-219 (1990).
- Sheibani et al, *Amer. J. Surg. Pathol.* **15**: 779-798 (1991).