

Catalogue No.

AB0359-100

Qty:

300 µg

Anti-TAU

Source: Goat

General description: Goat polyclonal antibody to microtubule-associated protein TAU (MAPT). This protein promotes microtubule assembly and stability, and might be involved in the establishment and maintenance of neuronal polarity.

Alternative names: DDPAC, FTDP-17, MSTD; PPND, MAPTL, MTBT1, MTBT2, PPP1R103, TAU antibody.

Form: Polyclonal antibody supplied as a 100 µl (3 mg/ml) aliquot in PBS, 20% glycerol and 0.05% sodium azide. This antibody is epitope-affinity purified from goat antiserum.

Immunogen: Affinity purified recombinant fusion protein using the C-terminal of TAU/MAPT (residues 575 to stop) and produced in E. coli.

Specificity: Detects the endogenous protein by Western blot.

Reactivity: Reacts with Human, Rat, Mouse, Monkey and Canine proteins

Sample	WB	IHC (F)	IHC (P)	IF	ELISA	IEM
Human	+++	ND	ND	ND	ND	ND
Rat	+++	ND	ND	ND	ND	ND
Mouse	+++	ND	ND	ND	ND	ND
Monkey	+++	ND	ND	ND	ND	ND
Canine	+++	ND	ND	ND	ND	ND

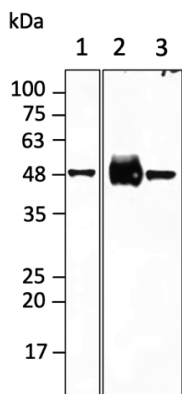
+++ excellent, ++ good, + poor, ND not determined

Usage:

WB: 1:500-1:2,000

Storage: Store at -20 C for long-term storage. Store at 2-8 C for up to one month.

Special instructions: Avoid freeze/thaw cycles..



Anti-TAU Ab at 1/2,000 dilution; lanes with 40 µg of total lysates; 1 - SH-SY5Y, 2 – brain, 3 - mouse new born head; chicken polyclonal to goat IgG conjugated to HRP (AB1125) at 1/10,000 dilution;

For research use only, not for diagnostic use

SICGEN's Proprietary Immunogen Policy

In order to produce high specific antibodies SICGEN has invested a lot of time and effort into selecting immunogen sequences. SICGEN has decided to protect this information by not publishing it on the website. However, these sequences are available on request.