

Catalogue No.

AB0378-100

Qty:

300 µg

Anti-BCL2

Source: Goat

General description: Goat polyclonal antibody to BCL2. This protein belongs to a family that act as anti- or pro-apoptotic regulators that are involved in a wide variety of cellular activities. Regulates cell death by controlling the mitochondrial membrane permeability and appears to function in a feedback loop system with caspases.

Alternative names: Apoptosis Regulator Bcl-2, BCL2 Apoptosis Regulator, B-Cell CLL/Lymphoma 2, PPP1R50, Protein Phosphatase 1 Regulatory Subunit 50 antibody

Form: Polyclonal antibody supplied as a 100 µl (2 mg/ml) aliquot in PBS, 20% glycerol and 0.05% sodium azide.

Immunogen: Recombinant affinity purified peptide derived from within residues 143 aa to the N-terminus of human BCL2 produced in E. coli.

Specificity: Detects a band of approximately 25 kDa by Western blot in the following cell lysate: LS174T, Jurkat and HUH.

Reactivity: Reacts with Human, Rat, Mouse, Monkey and Canine proteins

Sample	WB	IHC (F)	IHC (P)	IF	ELISA
Human	+++	ND	ND	ND	ND
Rat	+++	ND	ND	ND	ND
Mouse	+++	ND	ND	ND	ND
Monkey	+++	ND	ND	ND	ND
Canine	+++	ND	ND	ND	ND

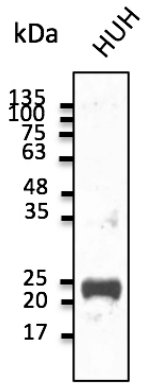
+++ excellent, ++ good, + poor, ND not determined

Usage:

WB: 1:500-1:2,000

Storage: Store at -20 C for long-term storage. Store at 2-8 C for up to one month.

Special instructions: Avoid freeze/thaw cycles..



Anti-BCL2 Ab at 1:1,000 dilution; 50 µg of total protein per lane; rabbit polyclonal to goat IgG (HRP) at 1/10,000 dilution;

For research use only, not for diagnostic use

SICGEN's Proprietary Immunogen Policy

In order to produce high specific antibodies SICGEN has invested a lot of time and effort into selecting immunogen sequences. SICGEN has decided to protect this information by not publishing it on the website. However, these sequences are available on request.