

Catalogue No.

AB4344-100

Qty:

300 µg

Anti-Miranda

Source: Chicken

General description: Chicken polyclonal antibody to Miranda. This protein plays a role in neurogenesis in Drosophila embryos.

Alternative names: CG12249, Dmel\CG12249, mir, Mir, MIR, Mira, MIRA antibody.

Form: Polyclonal antibody supplied as a 100 µl (3 mg/ml) aliquot in PBS, 20% glycerol and 0.05% sodium azide. This antibody is epitope-affinity purified from yolk egg.

Immunogen: Recombinant peptide derived from within residues 220 aa to the N-terminus of Drosophila melanogaster Miranda produced in E. coli.

Specificity: Detects endogenous levels of Miranda protein by immunofluorescence.

Reactivity: Reacts with Fruit fly proteins

Sample	WB	IHC (F)	IHC (P)	IF	ELISA
Fruit fly	+++	ND	ND	+++	ND

+++ excellent, ++ good, + poor, ND not determined

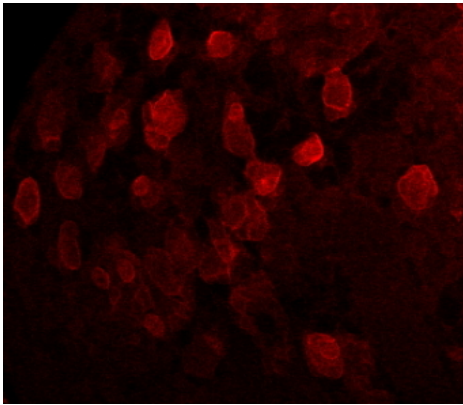
Usage:

WB: 1:500-1:2,000

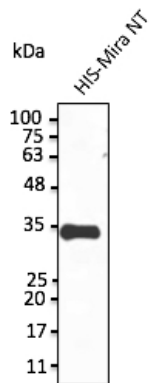
IF: 1:50-1:500

Storage: For continuous use, store at 2-8 deg;C for one-two days. For extended storage, store in -20 deg;C freezer. Working dilution samples should be discarded if not used within 12 hours.

Special instructions: The antibody solution should be gently mixed before use..



Immunofluorescence – anti-Miranda Ab in fly cells at 1/50 dilution; cells were fixed with 4% of PFA;



Anti-Miranda Ab at 1/1,000 dilution; protein at 20 ng per lane; rabbit polyclonal to goat IgG (HRP) at 1/10,000 dilution;

For research use only, not for diagnostic use

SICGEN's Proprietary Immunogen Policy

In order to produce high specific antibodies SICGEN has invested a lot of time and effort into selecting immunogen sequences. SICGEN has decided to protect this information by not publishing it on the website. However, these sequences are available on request.