

Catalogue No.

AB6570-100

Qty:

300 µg

Anti-TagRFP

Source: Goat

General description: Goat polyclonal antibody to TagRFP (orange fluorescent protein). TagRFP is a basic (constitutively fluorescent) fluorescent protein, monomeric engineered derivative of fluorescent protein (RFP) isolated from members of the *Entacmaea quadricolor*. It has very low acid sensitivity. TagRFP is a ~26 kDa protein that is optimally excited at a 555 nm and has a maximum of emission at 584 nm. This fluorescent protein is used in research as a reporter to label and study the biology of the cell using whole body imaging.

Alternative names: N/A

Form: N/A

Immunogen: Affinity purified recombinant fluorescent protein (HIR78_01785 from *Bacillus subtilis*) and produced in *E. coli*.

Specificity: In lysates of transfected cells with the plasmid containing the fluorescent sequence, detects the recombinant protein by Western blot.

Reactivity: Reacts with Transfected cells proteins

Sample	WB	IHC (F)	IHC (P)	IF	ELISA	IEM
Transfected cells	+++	+++	+++	+++	ND	+++

+++ excellent, ++ good, + poor, ND not determined

Usage:

WB: 1:500-1:5,000

IHC (F): 1:50-1:500

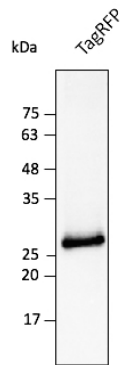
IHC (P): 1:50-1:500

IF: 1:50-1:500

IEM: 1:50-1:500

Storage: For continuous use, store at 2-8 C for one-two days. For extended storage, store in -20 C freezer. Working dilution samples should be discarded if not used within 12 hours.

Special instructions: The antibody solution should be gently mixed before use..



Anti-TagRFP Ab at 1/2,500 dilution using HEK293 transfected cell lysates at 40 µg per lane; rabbit polyclonal to goat IgG (HRP) at 1/10,000 dilution;

For research use only, not for diagnostic use

SICGEN's Proprietary Immunogen Policy

In order to produce high specific antibodies SICGEN has invested a lot of time and effort into selecting immunogen sequences. SICGEN has decided to protect this information by not publishing it on the website. However, these sequences are available on request.