

Catalogue No. AB0040-200
AB0040-500

Qty: 600 µg (3 mg/ml)
1.5 mg (3 mg/ml)

mCherry Polyclonal Antibody

Source: Goat

General description: Goat polyclonal antibody to mCherry (Cherry fluorescent protein).

Alternative names: Cherry fluorescent protein; dsRed, red fluorescent protein, tdTomato antibody.

Form: Polyclonal antibody supplied as a 200 or 500 µl (3 mg/ml) aliquot in PBS, 20% glycerol and 0.05% sodium azide. This antibody is epitope-affinity purified from goat antiserum.

Immunogen: Purified recombinant peptide produced in *E. coli*.

Specificity: In 293HEK cells transfected with cds plasmid detects a band of 29 kDa by Western blot. This antibody recognizes very well tdTomato and does not recognize GFP (green fluorescent protein).

Reactivity: Red Fluorescent Protein (dsRed), tdTomato and mCherry.

Sample	WB	IHC (p)	IHC (f)	IF	ELISA	IEM
Transfected cells	+++	+++	+++	+++	ND	+++

+++ excellent, ++ good, + poor, ND not determined

Usage: Western blot 1:500-1:5,000
Immunofluorescence 1:50-1:500
Immunohistochemistry (paraffin) 1:50-1:500
Immunohistochemistry (frozen) 1:50-1:500

Storage: Store at -20 C for long-term storage. Store at 2-8 C for up to one month.

Special instructions: Avoid freeze/thaw cycles.

References:

1. Dutta SB, Linneweber GA, Andriatsilavo M, et al. *Curr Bio* 2023 Jan. PMID: 36640763
2. Balmer TS, Trussell LO. *Bio Protoc* 2022 May. PMID: 35813023
3. Takahashi TM, Hirano A, Kanda T, et al. *Cell Rep Methods* 2022 Nov. PMID: 36452866
4. Letchuman S, Tucker A, Miranda D, et al. *eNeuro* 2022 Oct. PMID: 36265906
5. Boudjadja MB, Culotta I, Paula GCD, et al. *Curr Biol* 2022 Sep. PMID: 36182699
6. Bassi JK, Connelly AA, Butler AG, et al. *J Comp Neurol* 2022 Aug. PMID: 35988033
7. Hermanns T, Graf-Boxhorn S, Poeck B et al. *Curr Biol* 2022 Jul. PMID: 35914533
8. Yoshinaga S, Honda T, Kubo KI, et al. *Neurosci Res* 2022 Mar. PMID: 35364133
9. Ferreira JV, Soares AR, Ramalho J, et al. *Sci Adv* 2022 Mar. PMID: 35333565
10. Call CL, Neely SA, Early JJ, et al. *bioRxiv* Feb 2022

References (cont.)

11. Wiegmann RP. PhD Thesis, Universitätsklinikum Hamburg Eppendorf, Hamburg, Germany, 2021
12. Sun W, Choi I, Stoyanov S, et al. *Nat Commun* 2021 Oct. PMID: 34663792
13. Pusic KM, Kraig RP, Pusic AD, et al. *PLoS One* 2021 Aug. PMID: 34388189
14. Escrevente C, Bento-Lopes L, Ramalho JS, et al. *J Cell Sci* 2021 May. PMID: 34002205
15. Sanchez-Aguilera A, Wheeler DW, Jurado-Parras T, et al. *PLoS Biol* 2021 May. PMID: 33956790
16. Kaise T and Kageyama R. *Gene Expression Patterns* Mar 2021. PMID: 33675998
17. Call CL and Bergles DE. *bioRxiv* 2021
18. Towler B, Pashler A, Haime H, et al. *bioRxiv* 2021
19. Yu Q, Du, M Zhang W, et al. *Cell Mol Gastroenterol Hepatol* 2020 Dec. PMID: 33340715
20. Lewis EM, Stein-O'Brien GL, Patino AV, et al. *Neuron* 2020 Nov. PMID: 33113347
21. Niu X, Liu L, Wang T, et al. *J Neurosci* 2020 Jul. PMID: 32690615
22. Cheung P, Xiol J, Dill MT, et al. *Cell Stem Cell* 2020 Jul. PMID: 32730753
23. Takahashi TM, Sunagawa GA, Soya S, et al. *Nature* 2020 Jun. PMID: 32528181
24. MacDonald AJ, Holmes FE, Beall C, et al. *Glia* 2020 Jun. PMID: 31880353
25. Ceto S, Sekiguchi KJ, Takashima Y, et al. *Cell Stem Cell* 2020 Jul. PMID: 32758426
26. Mikedis MM, Fan Y, Nicholls PK, et al. *Elife* 2020 Jul 20. PMID: 32686646
27. Neubarth NL, Emanuel AJ, Liu Y, et al. *Science* 2020 Jun. PMID: 32554568
28. Sun W, PhD Thesis, Otto von Guericke University Magdeburg, Germany 2020
29. Hastings RL, Massopust RT, Haddix SG. *Skelet Muscle* 2020 May. PMID: 32381068
30. Liu CY, Tsai CJ, Yasugaki S, et al. *Neurosci Res* 2020 Apr. PMID: 32283105
31. Cherqui S - US Patent App. 16/820,368, 2020
32. Yoon S, Parnell E, Kasherman M, et al. *Neuron* 2020 Feb. PMID: 31813652
33. Nguyen R, Venkatesan S, Binko M, et al. *J Neurosci* 2020 Jan. PMID:32005764
34. Wu JS, Yi E, Manca M, et al. *Elife* 2020 Jan. PMID:31975688
35. Touahri Y, Dixit R, Kofoed RH, et al. *Theranostics* 2020. PMID: 32194850
36. Bai L, Mesgarzadeh S, Ramesh KS, et al. *Cell* 2019 Nov. PMID:31730854
37. Riera TI, PhD Thesis, University of Munich, Germany 2019
38. Paixao S, Loschek L, Gaitanos L, et al. *Neuron* 2019 Oct. PMID:31586516
39. Pedone E, Postiglione L, Aulicino F, et al. *Nat Commun* 2019 Oct. PMID:31578371
40. Ceto S, Sekiguchi KJ, Takashima, Y, et al. *bioRxiv* 2019
41. Adler AF, Cardoso T, Nolbrant S, et al. *Cell Rep* 2019 Sep. PMID:31553914
42. Zheng Y, Liu P, Bai L, et al. *Neuron* 2019 Aug. PMID:31248728
43. Hsu KS, Otsu W, Li Y, et al. *Sci Rep* 2019 Aug. PMID:31439888
44. Rusu P, Shao C, Neuerburg A, et al. *Cell Stem Cell* 2019 Jul. PMID:31303549
45. Binder S, Molle M, Lippert M. *J Neurosci* 2019 Jul. PMID:31285301
46. Pepe-Mooney BJ, Dill MT, Alemany A, et al. *Cell Stem Cell* 2019 May. PMID:31080134
47. Cherqui S - US Patent App. 16/082,487, 2019
48. Krause T, Spindler L, Poeck B, et al. *Curr Biol* 2019 May. PMID:31104933
49. Balmer TS, Trussell LO. *Elife* 2019 Apr. PMID:30994458
50. Zhou X, Oishi Y, Cherasse Y, et al. *Neurochem Int* 2019 Mar. PMID:30690114
51. Otsu W, Hsu YC, Chuang JZ, et al. *J Neurosci* 2019 Feb. PMID:30819798
52. Kumamaru H, Lu P, Rosenzweig ES, et al. *Cell Rep* 2019 Feb. PMID:30811984
53. MacDonald AJ, Holmes FE, Beall C, et al. *bioRxiv* 2019
54. Guerrero-Juarez CF, Dedhia PH, Jin S, et al. *Nat Commun* 2019 Feb. PMID:30737373
55. Whissell PD, Bang JY, Khan I, et al. *eNeuro* 2019 Jan-Feb. PMID:30834305
56. Gao R, PhD Thesis, Northwestern University, USA 2018
57. Deshpande D, PhD Thesis, Ruperto-Carola University of Heidelberg, Germany 2018
58. Pedone E, Rocca DL, Postiglione L, et al. *bioRxiv* 404699; Sept 2018
59. D'Agostino G, Lyons D, Cristiano C, et al. *Cell Metab* 2018 Aug. PMID:30146485
60. Al-Osta I, Mucha M, Pereda D, et al. *Front Cell Neurosci* 2018 Jul. PMID:30072872
61. Movahedi K, Wiegmann R, De Vlaminck K, et al. *Biotechnol Bioeng* 2018 Jul. PMID:29573361
62. Cardoso T, Adler A, Mattsson B, et al. *J Comp Neurol* 2018 Jul. PMID:30007046

References (cont.)

63. Miesfeld JB, Moon MS, Riesenberger AN, et al. *Sci Rep* 2018 Jul. PMID:29977079
64. Liu XS, Wu H, Krzisch M, et al. *Cell* 2018 Feb. PMID:29456084
65. Miesfeld JB, Glaser T, Brown NL. *Gene Expr Patterns* 2017 Dec. PMID:29225067
66. Oliveira CR, Lemaitre R, Tazaki A, et al. *Dev Biol* 2017 Oct. PMID:29198566
67. Lin B, Coleman JH, Peterson JN, et al. *Cell Stem Cell* 2017 Nov. PMID:29174332
68. Rocca CJ, Goodman SM, Dulin JN, et al. *Sci Transl Med* 2017 Oct. PMID:29070698
69. Kodani S, Soya S, Sakurai T. *J Neurosci* 2017 Jun. PMID:28642284
70. Saito M, Otsu W, Hsu KS, et al. *EMBO Rep* 2017 Jun. PMID:28607034
71. Castellano JM, Mosher KI, Abbey RJ, et al. *Nature* 2017 Apr. PMID:28424512
72. Shevelkin AV, Terrillion CE, Abazyan BN, et al. *Neurobiol Dis* 2017 Apr. PMID:28392471
73. Agarwal A, Wu PH, Hughes EG, et al. *Neuron* 2017. PMID:28132831
74. Abraira VE, Kuehn ED, Chirila AM, et al. *Cell* 2017 Jan. PMID:28041852
75. Krishnamurthy VV, Khamo JS, Mei W, et al. *Development* 2016 Nov. PMID:27697903
76. Espinosa-Medina I, Saha O, Boismoreau F, et al. *Science* 2016 Nov. Supplemental Information, PMID:27856909
77. Falkner S, Grade S, Dimou L, et al. *Nature* 2016 Oct. PMID:27783592
78. Vyas P, Wu JS, Zimmerman A, et al. *J. Assoc. Res. Otolaryngol* 2016 Sep. PMID:27696081
79. Sargiannidou I, Kim GH, Kyriakoudi S, et al. *Neurogenetics* 2015 Jul. PMID:25771809
80. Merienne N, Delzor A, Viret A, et al. *Gene Ther* 2015 Oct. PMID:26109254
81. Viheriala T, MSc Thesis, University of Tampere, Finland, 2014

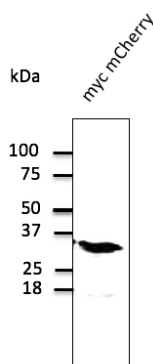


Fig1 - Anti-mCherry Ab at 1/1,000 dilution; 293 cells transfected with myc-mCherry;

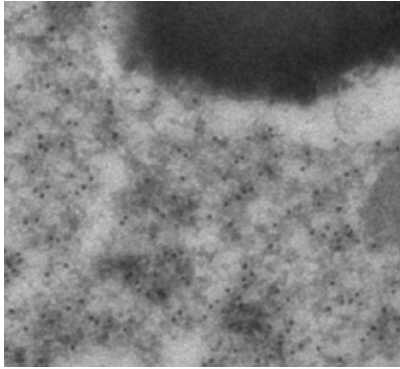


Fig2 - Immunogold labeling of RPE, *in vivo* injected with mCherry expressing vector;

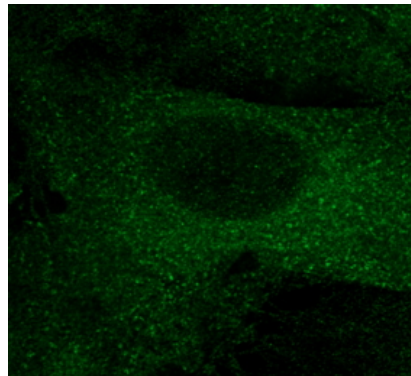


Fig3 - Anti-mCherry Ab in COS-7 cells transfected with mCherry-EEA1 at 1/100 dilution;

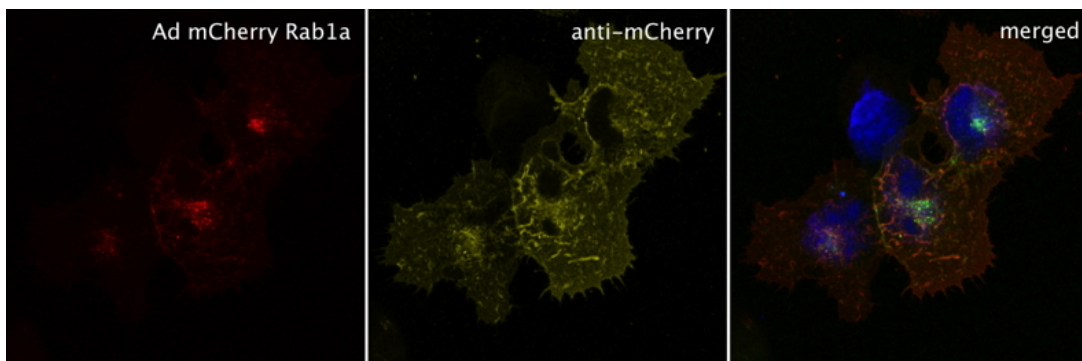
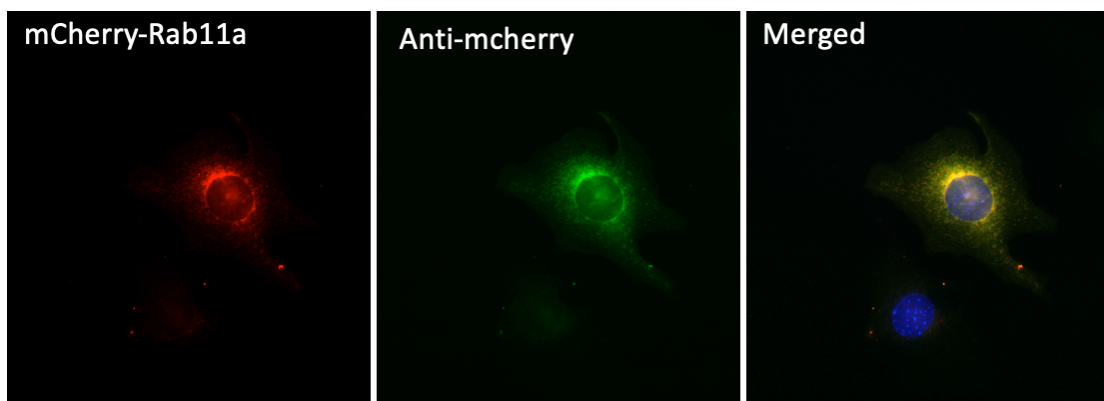


Fig4 - 293 HEK cells transduced with Ad mCherry Rab1a and stained with anti-mCherry;





Product Data Sheet

001 Rev1 Jan 2012 by JR

Fig5 - Immunofluorescence – anti-mCherry Ab using hCEC cells transduced with mCherry-Rab11a; cells were fixed with methanol and anti-Rab11a at 1/250;

For research use only, not for diagnostic use

SICGEN's Proprietary Immunogen Policy

In order to produce high specific antibodies SICGEN has invested a lot of time and effort into selecting immunogen sequences. SICGEN has decided to protect this information by not publishing it on the website. However, these sequences are available on request.