

Datasheet



Mouse mAb to **CD50**
Clone **101-1D2**
Isotype **IgG1-κ**

Source

A BALB/c mouse was immunized with stimulated human leucocytes.
Fusion partner: NS-1.

Specifications

101-1D2 reacts with the cellular adhesion molecule CD50 (ICAM-3), a single chain polypeptide with a MW of 12 kDa. The protein is heavily glycosylated and resistant to phosphatidylinositol phospholipase C treatment so probably not PO-anchored. 101-1D2 was provisionally clustered as CDw50 at the IV and confirmed as CD50 at the V international workshop on human leucocyte differentiation antigens.

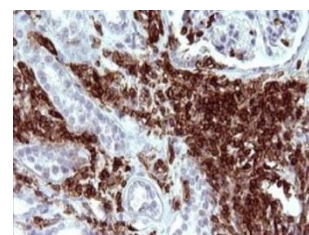


Figure 1: Human kidney stained for CD50 (paraffin).

Species reactivity

Positive: human.

Applications

101-1D2 is excellent for CD50 staining in paraffin sections and for flow cytometry.

Flow cytometry	Frozen sections	Immunofluorescence	Paraffin sections
+	+	+	Citrate

Format

Produced in tissue culture, contains no host Ig. Antibodies are affinity purified and presented in PBS with 0,02% sodium azide.

Stored at 4°C-8°C, shelf life is at least 24 months after purchase.

Dilution advice

- Flow cytometry (1-2 µg/million cells in 0,1 ml).
- Immunofluorescence (1-2 µg/ml).
- Immunohistology (1-2 µg/ml for 30 min at RT; staining of formalin-fixed tissues requires boiling tissue sections in 10mM citrate buffer, pH6.0, for 10-20 min followed by cooling at RT for 20 minutes).

Positive control

HL-60 or THP-1 cells. Lymph node and tonsil.

References

- Vilella R, et. al. *Tissue Antigens*, **36(5)**: 203-10 (1990).
- Pino-Otin MR, et. al. *J. of Immunology*. **154(6)**: 3015-24 (1995).
- Knapp, W. et. al. *Leucocyte Typing IV*, p541, 667-670, 1087, Oxford Univ. Press (1989).
- Schlossman SF, et. al. *Leucocyte Typing V*, p1542-1547, 2011, Oxford Univ. Press, (1993).