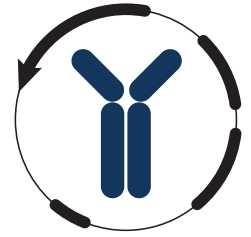


# Datasheet



Mouse mAb to **CD31**  
Clone **158-2B3**  
Isotype **IgG1-κ**

## Source

A BALB/c mouse was immunized with stimulated human leucocytes.  
Fusion partner: NS-1.

## Specifications

158-2B3 reacts with CD31 (PECAM-1), a 130 kDa member of the immunoglobulin gene superfamily that is expressed on cells of the vasculature, including platelets, endothelial cells, myeloid cells, and certain lymphocyte subsets. 158-2B3 has been clustered at the VI<sup>th</sup> HLDA Workshop.

## Species reactivity

Positive: human.

## Applications

158-2B3 reacts with angiosarcomas. Staining of nonvascular tumors (excluding hematopoietic neoplasms) is rare.

Flow cytometry	Frozen sections	Immunofluorescence
+	+	+

## Format

Produced in tissue culture, contains no host Ig. Antibodies are affinity purified and presented in PBS with 0,02% sodium azide.

Stored at 4°C-8°C, shelf life is at least 24 months after purchase.

## Dilution advice

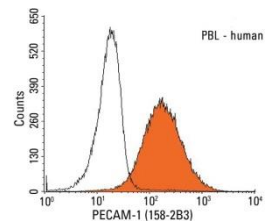
- Flow cytometry (0,5-1,0 µg/million cells in 0,1 ml).
- Immunofluorescence (0,5-1,0 µg/ml).
- Immunohistology ( 1-2 µg/ml for 30 min at RT; an appropriate antigen retrieval method for staining of formalin-fixed tissues has not been established to date).

## Positive control

Jurkat cells. Tonsil or Angiosarcoma.

## References

- Kishimoto T. et al., eds. Leukocyte Typing VI, Garland Publishing, Inc, New York and London, (1997).
- Sandilands, G. et al. *Clin. and Exp. Immunology*, **162(3)**: 516-27 (2010).



**Figure 1:** Human PBL stained with 158-2B3 (FACS).