

Datasheet



Mouse mAb to **CD45RA**
Clone **158-4D3**
Isotype **IgG2a-κ**

Source

A BALB/c mouse was immunized with stimulated human leucocytes.
Fusion partner: NS-1.

Specifications

CD45 glycoprotein have various molecular weights on various cell types: B-cell 240 kDa, thymocytes 180 kDa, T-cell multiple bands. Reduced in PAGE gels: 180 and 240 kDa. Relevant epitopes are termed CD45RA (exon 4), CD45 RB (exon 5, CD45RC (exon 6) and CD45R or CD45RO (exons 4-6 spliced out). 158-4D3 was clustered in Boston at the Vth International CD workshop as anti CD45RA, useful to differentiate “naïve” T-cells from activated (CD45R0^{+ve}) T-cells, or to differentiate T-cell lymphomas (CD45R0^{+ve}) from B-cell lymphomas (CD45RA^{+ve}).

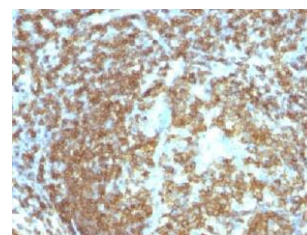


Figure 1: Human tonsil stained with 158-4D3 (paraffin).

Species reactivity

Positive: human.

Applications

MAbs against CD45 can be used to differentiate lymphomas from carcinomas. In Hodgkin's disease CD45 is usually not expressed.

Flow cytometry	Frozen sections	Immunofluorescence	Paraffin sections
+	+	+	Citrate

Format

Produced in tissue culture, contains no host Ig. Antibodies are affinity purified and presented in PBS with 0,02% sodium azide.

Stored at 4°C-8°C, shelf life is at least 24 months after purchase.

Dilution advice

- Flow cytometry (0,5-1,0 µg/million cells in 0,1 ml).
- Immunofluorescence (0,5-1,0 µg/ml).
- Immunohistology (formalin-fixed: 1-2 µg/ml for 30 min at RT; staining of formalin-fixed tissues requires boiling tissue sections in 10mM citrate buffer, pH 6.0, for 10-20 min followed by cooling at RT for 20 minutes).

Positive control

Daudi, Raji, IM9 and human lymphocytes. Human lymph node and tonsil.

References

- Schlossman S.F. et al, In Leucocyte Typing V, Oxford University Press, 386 398, (1995).