

Datasheet



Mouse mAb to **CD28**
Clone **204-12**
Isotype **IgG2b-κ**

Source

A BALB/c mouse was immunized with human leucocytes.
Fusion partner: NS-1.

Specifications

CD28, a glycoprotein of 44-88 kDa, is the critical T-cell co-stimulatory receptor which provides to the cell the important second activation signal by binding CD80 and CD86 that are expressed by antigen presenting cells. While 204-12 remained unclustered at the VIth International Workshop on human leukocyte differentiation antigens, the antibody has later been verified as CD28 specific.

Species reactivity

Positive: Human, Mouse.

Applications

204-12 can be applied for specific detection of CD28 on T-lymphocytes in peripheral blood and in frozen tissue sections and in extension for the characterization of immunodeficiency, leukemias and lymphomas. It can also be used for functional studies.

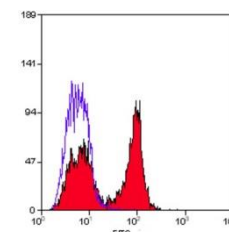


Figure 1: Human PBL stained for CD28 (FACS).

Flow cytometry	Frozen sections	Functional studies	Immunofluorescence
+	+	+	+

Format

Produced in tissue culture, contains no host Ig. Antibodies are affinity purified and presented in PBS with 0,02% sodium azide.
Stored at 4°C-8°C, shelf life is at least 24 months after purchase.

Dilution advice

- Flow cytometry (0,5-1,0 µg/million cells in 0,1 ml).
- Functional studies (0,02-2,0 µg/ml without azide).
- Immunofluorescence (0,5-1,0 µg/ml).
- Immunohistology (1-2 µg/ml for 30-60 min at RT; for staining of formalin-fixed tissues no suitable antigen retrieval method is known to date).

Positive control

Jurkat cells or human lymph nodes and tonsils, epidermis: Langerhans cells.

References

- Kishimoto T. et al., eds. Leukocyte Typing VI, Garland Publishing, Inc, New York and London, (1997).