

Datasheet



Mouse mAb to **CRASH**
Clone **7B6**
Isotype **IgG1-κ**

Source

A BALB/c mouse was immunized with CRASH recombinant protein and synthetic peptide.
Fusion partner: SP2/0.

Specifications

7B6 reacts with CRASH, a 308 AA glycoprotein sharing 32% homology with human asparaginase and identical to Asparaginase-Like Protein (ALP) found in rat sperm. CRASH is found in a variety of tumors but only occasionally in normal tissues. Especially ovarian cancers are highly positive. CRASH is further found in brain tumors, some colonic cancers, some lung cancers, some prostate cancers, uterine cancers, some breast cancers and some thyroid cancers. It was not found in serum. In Western blot 3 bands are demonstrated of 45 kDa, 28 kDa and 15 kDa.

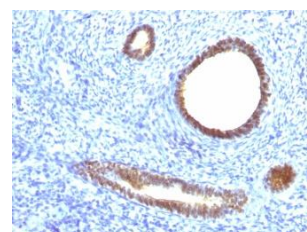


Figure 1: Human uterus stained with 7B6 (paraffin)

Species reactivity

Positive: human.

Applications

7B6 can be used on paraffin sections, ELISA, and Western blot.

ELISA	Frozen sections	Paraffin sections	Western blot
+	+	Citrate	+

Format

Produced in tissue culture, contains no host Ig. Antibodies are affinity purified and presented in PBS with 0,02% sodium azide.
Stored at 4°C-8°C, shelf life is at least 24 months after purchase.

Dilution advice

- ELISA (solid phase: 0,1-100 µg/ml; tracer: 0,001-100 µg/ml for 30 min at RT).
- Immunoblotting (1-2 µg/ml)
- Immunohistology (formalin-fixed: 1-2 µg/ml for 30 min at RT; staining of formalin-fixed tissues requires boiling tissue sections in 10mM Citrate Buffer, pH 6,0, for 10-20 min followed by cooling at RT for 20 minutes).

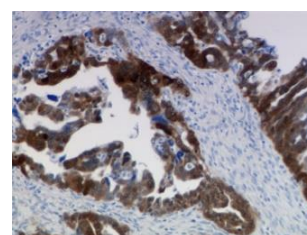


Figure 2: Ovarian cancer stained with 7B6 (paraffin)

Positive control

Ovarian cancer, KM22 breast cancer cells.

References

- Weidle, UH et al, Anticancer Res. 29(4): 951-63 (2009).