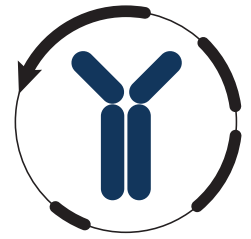


# Datasheet



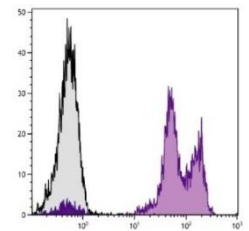
Mouse mAb to **CD11a**  
Clone **87-6F9**  
Isotype **IgG2b-κ**

## Source

A BALB/c mouse was immunized with stimulated human leucocytes.  
Fusion partner: SP2/0

## Specifications

87-6F9 Reacts with CD11a, a transmembrane molecule with 1145 amino acid residues and a MW of 180 kDa. CD11a is expressed on lymphocytes, granulocytes, monocytes and macrophages. Levels on memory T-cells tend to increase. CD11a plays a key role in mediating leukocyte adhesion to endothelium during inflammatory response through binding to ICAM 1 (CD54). Other ligands are ICAM-2 and ICAM-3. It is also involved in many other T-cell functions and immune phenomena. When paired with CD18, it forms the integrin alphaLbeta2 adhesion. 87-6F9 Potently blocks LFA-1 dependent homotypic cell aggregation and was typed in the IV<sup>th</sup> International Leucocyte Typing Workshop.



**Figure 1:** Human PBLs stained for CD11a (FACS).

## Species reactivity

Positive: human.

## Applications

87-6F9 Has been tested in flow cytometry and on frozen sections. It can specifically be applied to determine LFA-1 expression on T-lymphocytes and since it blocks LFA-1 dependent homotypic cell aggregation, it can also be used for functional studies.

| Flow cytometry | Frozen sections | Functional studies | Immunofluorescence | Paraffin sections | Western blot |
|----------------|-----------------|--------------------|--------------------|-------------------|--------------|
| +              | +               | +                  | +                  | -                 | +            |

## Format

Produced in tissue culture, contains no host Ig. Antibodies are affinity purified and presented in PBS with 0,02% sodium azide.

Stored at 4°C-8°C, shelf life is at least 24 months after purchase.

## Dilution advice

- Flow cytometry (0,5-1,0 µg/million cells in 0,1 ml).
- Functional studies (0,02-2,0 µg/ml without azide).
- Immunoblotting (1-2 µg/ml).
- Immunohistology (1-2 µg/ml for 30 min at RT; an appropriate antigen retrieval method for staining of formalin-fixed tissues has not been established to date).

## Positive control

Human leucocytes.

# Datasheet



## References

- Knapp et al. (Eds.), *Leukocyte Typing IV*, 1989 : sections N1 (pp. 543-551), N1.1 (pp. 551-553); N1.2 (pp. 553-554); N1.3 (pp. 555-558); N1.8 (pp. 566-570); N1.9 (pp. 570-574); N14.4 (pp. 689-693).
- Petruzzelli L et al. *J Immunol* **155(2)**: 854-866 (1995).
- Edwards CP et al. *J Biol Chem* **273(44)**: 28937-44 (1998).
- Shang XZ et al., *Eur J Immunol* **28(6)**: 1970-1979 (1998).
- Tian L et al. *J Immunol* **158(2)**: 928-936 (1997).