

Catalogue No.

Qty:

400 µg

1 mg

## Anti-CANX

**Source:** Goat

**General description:** Goat polyclonal to CANX (Calnexin) - endoplasmic reticulum (ER) membrane marker. CANX is a member of the calnexin family of molecular chaperones. This protein is a calcium-binding, ER-associated protein that interacts transiently with newly synthesized N-linked glycoproteins, facilitating protein folding and assembly. It may also play a central role in the quality control of protein folding by retaining incorrectly folded protein subunits within the ER for degradation.

**Alternative names:** Calnexin, CALX, CNX, FLJ26570, histocompatibility complex class I antigen binding protein p88, IP90, major histocompatibility complex class I antigen-binding protein p88, MS952, P90 antibody.

**Form:** Polyclonal antibody supplied as a 200 or 500 µl (2 mg/ml) aliquot in PBS, 20% glycerol and 0.05% sodium azide. This antibody is epitope-affinity purified from goat antiserum and it is identical to AB4100-200.

**Immunogen:** Purified recombinant peptide within residues 550 aa to the C-terminus of human CANX produced in *E. coli*.

**Specificity:** Detects a band of 90 kDa by Western blot in the following human (293A, primary fibroblasts, HaCat, HeLa, HMEC-1, Jurkat, MNT1, U-118, rat (TR-iBRB), mouse (3T3, AtT-20, Hepa, Raw264.7), monkey (COS-7) and canine (D17) whole cell lysates.

**Reactivity:** Reacts with Human, Rat, Mouse, Monkey and Canine proteins

Sample	WB	IHC (F)	IHC (P)	IF	ELISA
Human	+++	+++	+++	+++	ND
Rat	+++	+++	+++	+++	ND
Mouse	+++	+++	+++	+++	ND
Canine	+++	+++	+++	+++	ND
Monkey	+++	+++	+++	+++	ND

+++ excellent, ++ good, + poor, ND not determined

#### Usage:

WB: 1:500-1:5,000

IHC (P): 1:50-1:500

IHC (P): 1:200-1:1,000

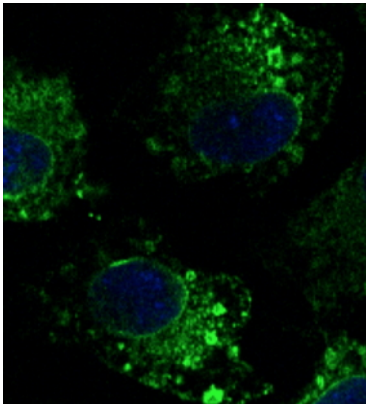
IHC (F): 1:200-1:1,000

**Storage:** For continuous use, store at 2-8 C for one-two days. For extended storage, store in -20 C freezer. Working dilution samples should be discarded if not used within 12 hours.

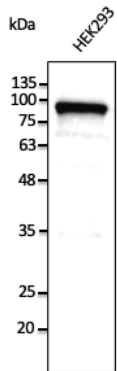
**Special instructions:** The antibody solution should be gently mixed before use..

#### References:

1. Catarino S, Ribeiro-Rodrigues TM, Sa Ferreira R, et al. Cells 2020 Apr. PMID: 32272685
2. Encarnacao M, Coutinho MF, Cho SM, et al. Mol Genet Genomic Med 2020 Sep. PMID: 32931663
3. Sacramento JF, Martins FO, Rodrigues T, et al. Front Endocrinol (Lausanne) 2020 Apr. PMID: 32411098
4. Boia R, Dias PAN, Martins JM, et al. J Control Release 2019 Nov. PMID: 31715277
5. Ferreira JV, Rosa Soares A, Ramalho JS, et al. PLoS One 2019 Oct. PMID: 31613922
6. Sacramento JF, Olea E, Ribeiro MJ, et al. J Physiol 2019 Aug. PMID: 31426127
7. Melo BF, Sacramento JF, Ribeiro MJ, et al. Nutrients 2019 May. PMID: 31141900
8. Sanzà P, Evans RD, Briggs DA, et al. J Cell Sci 2019 Apr. PMID: 30898842
9. Barbeitos JP, MSc Thesis, University of Coimbra, Portugal 2018
10. Cardoso MHS, PhD Thesis, NOVA University of Lisbon, Portugal 2018
11. Ribeiro ST, Tesio M, Ribot JC, et al. Leukemia 2017 Jul. PMID: 27899804
12. Pelkonen L, Sato K, Reinisalo M, et al. Mol Pharm 2017 Mar 6. PMID: 28112518
13. Martins-Marques T, Pinho MJ, Zuzarte M. et al. J Extracell Vesicles 2016 Sep. PMID: 27702427
14. Neves MMM, MSc Thesis, University of Coimbra, Portugal 2015
15. Ferreira RRS, MSc Thesis, Coimbra University 2015
16. Paiva RA, MSc Thesis, Coimbra University 2015
17. Samtleben S, PhD Thesis, Universität Würzburg 2014
18. Ribot JC, Ribeiro ST, Correia DV, Sousa AE, Silva-Santos B. J Immuno 2014 Mar, PMID: 24489097
19. Marques, CIR, MSc Thesis, Coimbra University 2013



Immunofluorescence – anti-CANX Ab in Hepa1-6 cells at 1/100 dilution; cells were fixed with 4% of PFA;



Anti-CANX Ab at 1/2,500 dilution; lysates at 50  $\mu$ g per lane; rabbit polyclonal to goat IgG (HRP) at 1/10,000 dilution;

For research use only, not for diagnostic use

#### SICGEN's Proprietary Immunogen Policy

In order to produce high specific antibodies SICGEN has invested a lot of time and effort into selecting immunogen sequences. SICGEN has decided to protect this information by not publishing it on the website. However, these sequences are available on request.