

Catalogue No.

Qty:

600 µg

Anti-Rab1 Pan

Source: Goat

General description: Goat polyclonal antibody to mouse Rab1. Rab1 belongs to the small GTPase superfamily, Rab family. Rab1 controls vesicle traffic from the endoplasmic reticulum to the Golgi apparatus.

Alternative names: RAB1A, RAB1B, RAS-associated protein RAB1A, ras-related protein Rab-1B, ras-related protein Rab-1A, ras-related protein Rab-1B, YPT1 antibody.

Form: Polyclonal antibody supplied as a 200 µl (3 mg/ml) aliquot in PBS, 20% glycerol and 0.05% sodium azide. This antibody is epitope-affinity purified from goat antiserum.

Immunogen: Purified recombinant peptides derived from within residues 110 aa to the C-terminus of mouse Rab1a and Rab1b produced in E. coli.

Specificity: Detects total Rab1 protein by Western blot in the following human, rat and mouse whole cell lysates and transfected cells with GFP-Rab1a and GFP-Rab1b cds.

Reactivity: Reacts with Human, Rat, Mouse, Monkey and Canine proteins

Sample	WB	IHC (F)	IHC (P)	IF	ELISA
Human	+++	+++	+++	+++	ND
Rat	+++	+++	+++	+++	ND
Mouse	+++	+++	+++	+++	ND
Canine	+++	+++	+++	+++	ND
Monkey	+++	+++	+++	+++	ND

+++ excellent, ++ good, + poor, ND not determined

Usage:

WB: 1:250-1:1,000

IHC (F): 1:250-1:1,500

IHC (P): 1:250-1:1,500

IF: 1:50-1:250

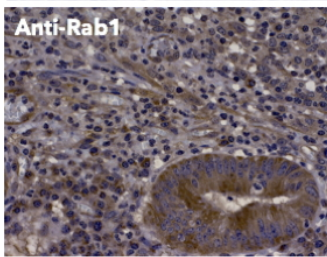
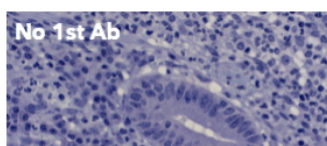
ELISA: ND

Storage: For continuous use, store at 2-8 C for one-two days. For extended storage, store in -20 C freezer. Working dilution samples should be discarded if not used within 12 hours.

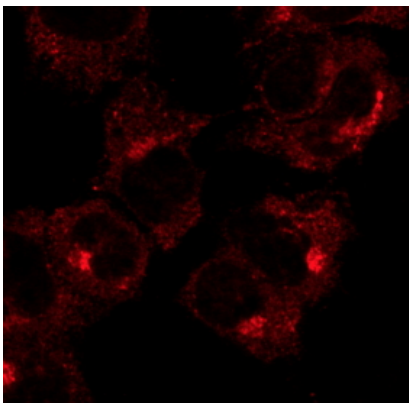
Special instructions: The antibody solution should be gently mixed before use..

References:

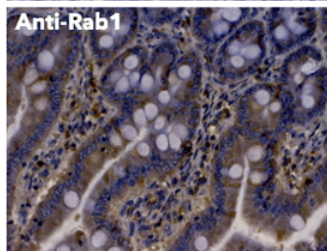
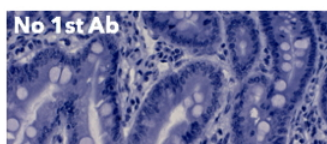
1. Mojallal M, Zheng Y, Hultin S et al. Nat Commun 2014 Aug 1;5:4557. PMID: 25080966



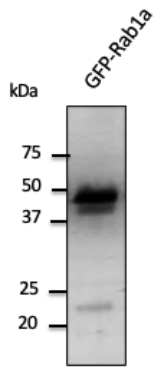
IHC of human appendix using anti-Rab1 antibody and FFPE tissue after heat-induced antigen retrieval. Anti-Rab1 Ab at 1:500/DAB detection.



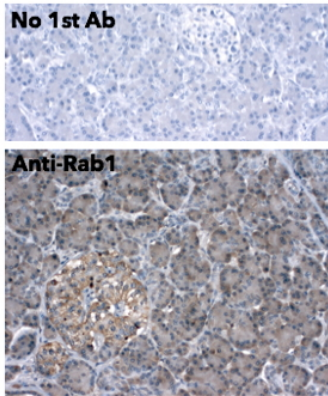
Immunofluorescence – anti-Rab1 Ab in COS-7 cells at 1/50 dilution; cells were fixed with 4% of PFA;



IHC of mouse intestine using anti-Rab1 antibody and FFPE tissue after heat-induced antigen retrieval. Anti-Rab1 Ab at 1:500/DAB detection.



Anti-Rab1 Ab at 1/1,000 dilution; 293HEK transfected lysate at 50 μ g per lane; Rabbit polyclonal to goat IgG (HRP) at 1/10,000 dilution.



IHC of human pancreas using anti-Rab1 antibody and FFPE tissue after heat-induced antigen retrieval. Anti-Rab1 Ab at 1:250/DAB detection.

For research use only, not for diagnostic use

SICGEN's Proprietary Immunogen Policy

In order to produce high specific antibodies SICGEN has invested a lot of time and effort into selecting immunogen sequences. SICGEN has decided to protect this information by not publishing it on the website. However, these sequences are available on request.