

# Datasheet



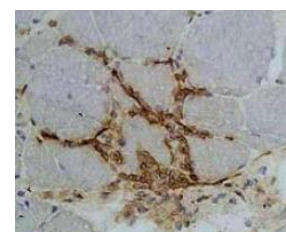
Mouse mAb to **CD11a**  
Clone **Cris-3**  
Isotype **IgG2b-κ**

## Source

A BALB/c mouse was immunized with stimulated human leucocytes.  
Fusion partner: NS-1.

## Specifications

Cris-3 reacts with CD11a, a transmembrane molecule with 1145 amino acid residues and a MW of 180 kDa. CD11a is expressed on lymphocytes, granulocytes, monocytes and macrophages. Levels on memory T-cells tend to increase. CD11a plays a key role in mediating leukocyte adhesion to endothelium during inflammatory responses through binding to ICAM-1 (CD54). Other ligands are ICAM-2 and ICAM-3. It is also involved in many other T-cell functions and immune phenomena. When paired with CD18, it forms the integrin alphaLbeta2 heterodimer also called LFA-1. LFA-1 is chiefly responsible for lymphocyte adhesion. CRIS-3 was typed in the Second International Leucocyte Typing Workshop.



**Figure 1:** Strong LFA expression on inflammatory cells invading non-necrotic muscle fibres (CRIS-3).

## Species reactivity

Positive: human.

## Applications

CRIS-3 has been tested in flow cytometry and on frozen sections. It can specifically be applied to determine LFA-1 expression on T-lymphocytes.

Flow cytometry	Frozen sections	Immunofluorescence	Paraffin sections
+	+	+	-

## Format

Produced in tissue culture, contains no host Ig. Antibodies are affinity purified and presented in PBS with 0,02% sodium azide.

Stored at 4°C-8°C, shelf life is at least 24 months after purchase.

## Dilution advice

- Flow cytometry (0,5-1,0 µg/million cells in 0,1 ml).
- Immunofluorescence (0,5-1,0 µg/ml).
- Immunohistology (1-2 µg/ml for 30 min at RT).

## Positive control

Human leucocytes.

# Datasheet



## References

- Reinherz et. al., EL. Leukocyte Typing II. New York: Springer-Verlag (1985).
- Jain et al. *Folia Neuropathol* **47(1)**, 33-42 (2009).