

Datasheet



Mouse mAb to **Keratin 8**
Clone **E2**
Isotype **IgG1-κ**

Source

A BALB/c mouse was immunized with an intermediate filament preparation of rat colon mucosa.

Specifications

E2 reacts with rat and frog keratin 8 (55 kDa). Keratin 8 is an epithelial cell marker and can also be found in certain malignancies like rat hepatoma 27 in case of E2. Furthermore, in rat, liver and salivary gland are positive, while esophagus, skeletal muscle and fibroblasts are negative for E2.

Species reactivity

Positive: frog (*Rana temporaria*; *Xenopus laevis*), rat.
Negative: human, mouse.

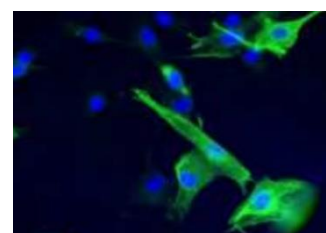


Figure 1: Embryonic rat liver cells stained for keratin 8 (FITC)

Applications

E2 has been used in immunohistochemistry, immunofluorescence tests and Western blots.

Flow cytometry	Frozen sections	Immunofluorescence	Immunoprecipitation	Paraffin sections	Western blot
+	+	+	+	-	+

Format

Produced in tissue culture, contains no host Ig. Antibodies are affinity purified and presented in PBS with 0,02 % sodium azide. Stored at 4°C- 8°C, shelf life is at least 24 months after purchase.

Dilution advice

- Flow Cytometry (1-2 µg/million cells in 0.1 ml, fix cells in 4% PFA for 10 min, at 4°C, permeabilize with 0,2% saponin or digitonin for 15 min, at 4°C).
- Immunoblotting (1-2 µg/ml).
- Immunofluorescence (1-2 µg/ml).
- Immunohistology (1-2 µg/ml for 30 min at RT; for staining of formalin-fixed tissues no antigen retrieval method is known to date).
- Immunoprecipitation (1-2 µg per 100-500 µg cell lysate protein/1ml of anti-mouse coated Sepharose-4B suspension).

Positive control

Rat colon, rat liver, rat salivary gland, rat hepatoma 27 cells.

Datasheet



References

- Troianovskiĭ, SM, *Bull. Eksp. Biol. Med.* **101(6)**: 733-6 (1986).
- Simirskiĭ V.N. et al. *Ontogenez.* **22(3)**: 245-56 (1991).