

# Datasheet



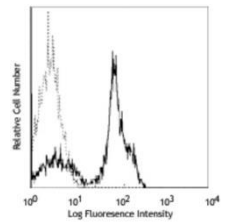
Mouse mAb to **CD2**  
Clone **EBS-CD-003**  
Isotype **IgG2b-κ**

## Source

A Biozzi mouse was immunized with human Thymocytes (3 pooled donors).  
Fusion partner: NS-1.

## Specifications

CD2 is a transmembrane glycoprotein that is expressed on peripheral blood T lymphocytes, NK cells and thymocytes. Interaction between CD2 and its counter receptor LFA3 (CD58) on opposing cells optimizes immune system recognition, thereby facilitating communication between helper T lymphocytes and antigen presenting cells, as well as between cytolytic effectors and target cells. EBS-CD-003 reacts with human T-cells, leukemic T-cells and T-cell lines. EBS-CD-003 also reacts with some, if not all, E-RFC-receptors on K and NK cells.



**Figure 1:** Human PBLs stained for CD2 (FACS).

## Species reactivity

Positive: human.

## Applications

Characterization of leukemia and lymphoma.

Flow cytometry	Frozen sections	Immunofluorescence	Paraffin sections
+	+	+	-

## Format

Produced in tissue culture, contains no host Ig. Antibodies are affinity purified and presented in PBS with 0.02% sodium azide.

Stored at 4°C-8°C, shelf life is at least 24 months after purchase.

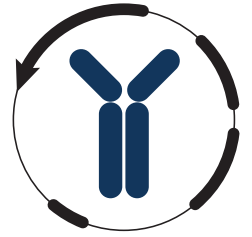
## Dilution advice

- Flow cytometry (0.5-1.0 µg/million cells in 0.1 ml).
- Immunofluorescence (0.5-1.0 µg/ml).
- Immunohistology (1.0-2.0 µg/ml for 30 min at RT; an appropriate antigen retrieval method for staining of formalin-fixed tissues has not been established to date).

## Positive control

293 or Jurkat cells. Lymph node and tonsil.

# Datasheet



## References

- Thurlow PJ, et al., *transplantation* **36**: 293-298 (1983).
- Kozarsky KF, et al, *Cell Immunol* **150**: 235-246 (1993).
- Leukocyte Typing V (S.F. Schlossman, et al, eds.) Oxford University Press, Oxford, (1995) p. 342-352.
- Bell GM, *J Immunol* **155**: 2805-2807 (1995).