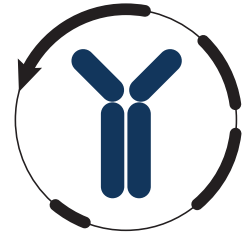


Datasheet



Mouse mAb to **CD6**
Clone **EBS-CD-005**
Isotype **IgG1-κ**

Source

A BALB/c mouse was immunized with cells of a human CD8+ human CTL clone.
Fusion partner: SP2/0.

Specifications

EBS-CD-005 recognizes the CD6 molecule, a single chain transmembrane glycoprotein of 120 kDa, which is expressed on the majority of mature T-cells and mature thymocytes. A B-cell subset is weakly positive and B-CLL's may also be reactive. CD6 is a type 1 transmembrane glycoprotein that is tyrosine phosphorylated during TCR-mediated T-cell activation. CD6 shows significant homology to CD5. Antibodies to CD6 are used to deplete T-cells from bone marrow transplants to prevent graft versus host disease.

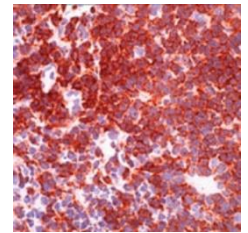


Figure 1: Human tonsil stained with EBS-CD-005 (frozen section).

Species reactivity

Positive: human.

Applications

Characterization of leukemia and lymphoma.

Flow cytometry	Frozen sections	Immunofluorescence	Paraffin sections
+	+	+	-

Format

Produced in tissue culture, contains no host Ig. Antibodies are affinity purified and presented in PBS with 0,02% sodium azide.

Stored at 4°C-8°C, shelf life is at least 24 months after purchase.

Dilution advice

- Flow cytometry (0,5-1,0 µg/million cells in 0,1 ml).
- Immunofluorescence (0,5-1,0 µg/ml).
- Immunohistology (1-2 µg/ml for 30 min at RT; an appropriate antigen retrieval method for staining of formalin-fixed tissue has not been established to date).

Positive control

293T, Ramos or MOLT-4 cells, lymph node and tonsil.

References

- Yssel et al., *Cell. Immunol.* **105**: 161 (1987).
- Kamoun et al., *J. Immunol.* **127**: 987 (1981).
- Reinherz et al., *Proc. Nat. Acad. Sci.* **79**: 6047 (1982).