

# Datasheet



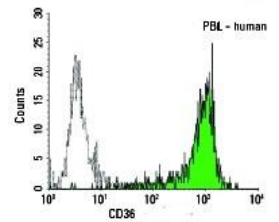
Mouse mAb to **CD36**  
Clone **EBS-CD-023**  
Isotype **IgG2b-κ**

## Source

A BALB/c mouse was immunized with gp88 purified from human platelets.  
Fusion partner: SP2/0.

## Specifications

CD36 is a 80-90 kDa protein, expressed on platelets, monocytes and macrophages, microvascular endothelial cells, erythrocyte precursors, mammary epithelial cells, and some macrophage derived dendritic cells. CD36 acts as a receptor for thrombospondin (TSP), collagen types I, IV and V, *P.falciparum* malaria-infected erythrocytes, and sickle erythrocytes. CD36 plays a role in platelet aggregation, macrophage foam cell development, inflammation, and the tissue ischemia observed in sickle cell disease and cerebral malaria.



**Figure 1:** Human PBL stained for CD36 (FACS).

## Species reactivity

Positive: human.

## Applications

Demonstration of CD36. Staining of TSH activated endothelial cells, granular layer of skin, monocytes/macrophages, erythroblasts, B-cell (weak), adipocytes.

| Flow cytometry | Frozen sections | Immunofluorescence | Paraffin sections |
|----------------|-----------------|--------------------|-------------------|
| +              | +               | +                  | +                 |

## Format

Produced in tissue culture, contains no host Ig. Antibodies are affinity purified and presented in PBS with 0,02% sodium azide.

Stored at 4°C-8°C, shelf life is at least 24 months after purchase.

## Dilution advice

- Flow cytometry (1-2 µg/million cells in 0,1 ml for 30 min, at 4°C).
- Immunofluorescence (1-2 µg/ml).
- Immunohistology (1-2 µg/ml for 30 min at RT; no antigen retrieval procedure is necessary for staining of formalin-fixed tissues).

## Positive control

HEL, U937 or C32 melanoma cells. Platelets, monocytes, macrophages, umbilical vein endothelium, microvascular endothelial cells in tonsil.

# Datasheet



## References

- Biggs et al, *J. Exp. Med.* **171**: 1883-1892 (1990).
- Stomski et al. *Exp. Cell Res.* **198**: 85-92 (1992).