

Datasheet



Mouse mAb to **CD48**
Clone **EBS-CD-030**
Isotype **IgG2a-κ**

Source

A BALB/c mouse was immunized with human PBL.
Fusion partner: NS-1.

Specifications

CD48 is 45 kDa glycosyl phosphatidyl-inositol (GPI)-anchored cell surface protein, highly expressed on lymphocytes and monocytes and weakly on granulocytes. Platelets, fibroblasts, epithelium and endothelium are negative. CD48 is one of the markers for detecting the GPI anchoring defect in patients with paroxysmal nocturnal hemoglobinuria (PNH). Also serves as a low affinity ligand for CD2.

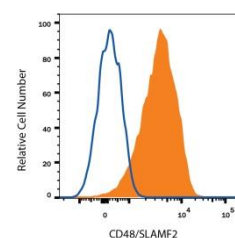


Figure 1: Human PBL stained for CD48 (FACS).

Species reactivity

Positive: human.

Applications

CD48 can indicate the condition of paroxysmal nocturnal hemoglobinuria (PNH).

Flow cytometry	Frozen sections	Immunofluorescence
+	+	+

Format

Produced in tissue culture, contains no host Ig. Antibodies are affinity purified and presented in PBS with 0,02% sodium azide.

Stored at 4°C-8°C, shelf life is at least 24 months after purchase.

Dilution advice

- Flow cytometry (0,5-1,0 µg/million cells in 0,1 ml).
- Immunofluorescence (0,5-1,0 µg/ml).
- Immunohistology (1-2 µg/ml for 30 min at RT; an appropriate antigen retrieval method for staining of formalin-fixed tissues has not been established to date).

Positive control

Daudi, JY, Raji, Jurkat, and human lymphocytes. Human lymph node and tonsil.

Datasheet



References

- Kishimoto T. et al., eds. *Leukocyte Typing VI*, p509-514, Garland Publishing, Inc, New York and London, (1997).
- Yokoyama S et al. *J Immunol* **146(7)**: 2192-2200 (1991).
- Kwong YL et al. *Am J Clin Pathol* **102(1)**: 30-35 (1994).
- Sandrin MS et al. *J Immunol*, **151(9)**: 4606-4613 (1993).
- Vaughan HA et al, *Transplantation* **36**: 446-450 (1983).
- Vaughan HA et al, *Immunogenetics* **33**: 113-117 (1991).