

# Datasheet



Mouse mAb to **Human IgG**  
Clone **EBS-huG**  
Isotype **IgG2a-κ**

## Source

A BALB/c mouse was immunized with purified human immunoglobulins.  
Fusion partner: SP2/0.

## Specifications

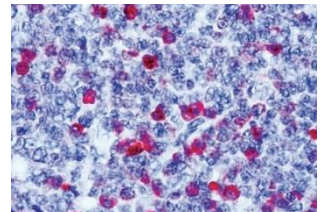
EBS-huG reacts specifically with human IgG and not with other types of immunoglobulins.

## Species reactivity

Positive: human.

## Applications

EBS-huG is excellent for ELISA (quantification of IgG) and as basis for anti-human IgG conjugates.



**Figure 1:** Human tonsil stained for human IgG (frozen)

ELISA	Flow cytometry	Frozen sections
+	+	+

## Format

Produced in tissue culture, contains no host Ig. Antibodies are affinity purified and presented in PBS with 0,02 % sodium azide.

Stored at 4°C- 8°C, shelf life is at least 24 months after purchase.

## Dilution advice

- ELISA (solid phase: 0,1-100 µg/ml; tracer: 0,001-100 µg/ml for 30 min at RT).
- Flow cytometry (0.5-1.0 µg/million cells in 0.1 ml).
- Immunohistology (1-2 µg/ml for 30 min at RT).

## Positive control

Human B-cells.

## References

- This antibody has not been published.