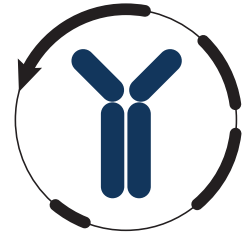


Datasheet



Mouse mAb to **Interferon γ**
Clone **G30**
Isotype **IgG2b- κ**

Source

A BALB/c mouse was immunized with E.coli derived recombinant human IFN γ (aa22-166).
Fusion partner: NS-0.

Specifications

G30 is specific for human IFN γ . It does not neutralize the biological activity of IFN γ .

Species reactivity

Positive: human.

Applications

G30 can be used for the detection of human IFN γ in ELISA and can be paired with IFN γ mAb G23, to form an EIA to measure IFN γ .

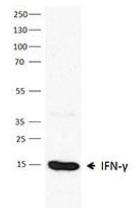


Figure 1:
Western blot
stained for
IFN γ

ELISA	Flow cytometry	Frozen sections	Immunoprecipitation	Pair	Western blot
+	+	+	+	G23	+

Format

Produced in tissue culture, contains no host Ig. Antibodies are affinity purified and presented in PBS with 0,02 % sodium azide.

Stored at 4°C- 8°C, shelf life is at least 24 months after purchase.

Dilution advice

- ELISA (solid phase: 0,1-100 $\mu\text{g/ml}$; tracer: 0,001-100 $\mu\text{g/ml}$ for 30 min at RT).
- Flow cytometry (0.5-1.0 $\mu\text{g/million cells}$ in 0.1 ml).
- Immunoblotting (1-2 $\mu\text{g/ml}$).
- Immunohistology (1-2 $\mu\text{g/ml}$ for 30 min at RT; an appropriate antigen retrieval method for staining of formalin-fixed tissues has not been established to date).
- Immunoprecipitation (1-2 μg per 100-500 μg of total cell lysate protein/1 ml of anti-mouse coated Sepharose-4B suspension).

Positive control

Human IFN γ , HEK293, T98G, Jurkat, Daudi cells.

References

- Kontsek, P. et al, *Mol Immunol.* **29**: 863-870 (1992).
- Kontsek, P. et al, *Immunol. Lett.* **35**: 281-284 (1993).