

Datasheet



Mouse mAb to **hCG-alpha**
Clone **HCGa35**
Isotype **IgG1-κ**

Source

A BALB/c mouse was immunized with recombinant hCG alpha.
Fusion partner: SP-2/0.

Specifications

HCGa35 reacts with hCG alpha chain, which is identical among hCG, TSH, FSH and LH. While hCG is secreted in large quantities by normal trophoblasts, it is present only in trace amounts in non-pregnant urine and sera but rises sharply during pregnancy. Besides trophoblastic tumors e.g. choriocarcinoma, large cell carcinoma, adenocarcinoma and squamous cell carcinoma of the lung are also positive in 90%, 60% and 20% of cases respectively. hCG expression by non-trophoblastic tumors may indicate aggressive behavior.

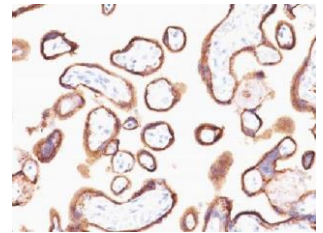


Figure 1: Human placenta stained with HCGa35 (paraffin)

Species reactivity

Positive: human.

Applications

Pregnancy and oncology.

Frozen sections	Paraffin sections
+	+, no AR!

Format

Produced in tissue culture, contains no host Ig. Antibodies are affinity purified and presented in PBS with 0,02 % sodium azide.

Stored at 4°C- 8°C, shelf life is at least 24 months after purchase.

Dilution advice

- Immunohistology (Formalin-fixed; 1-2 µg/ml for 30 minutes at RT; no special pre-treatment is required for staining of formalin-fixed tissues; note that heat induced antigen retrieval is NOT recommended for HCGa35).

Positive control

JAR or TT Cells. Placenta.

References

- McDonald EA et. al. *Endocrinology* **150**:4358-65 (2009).